

PLAT OF WABUN AVENUE

FROM
ACADEMY AVE. TO NELSON ST.

BOARD OF ALDERMEN

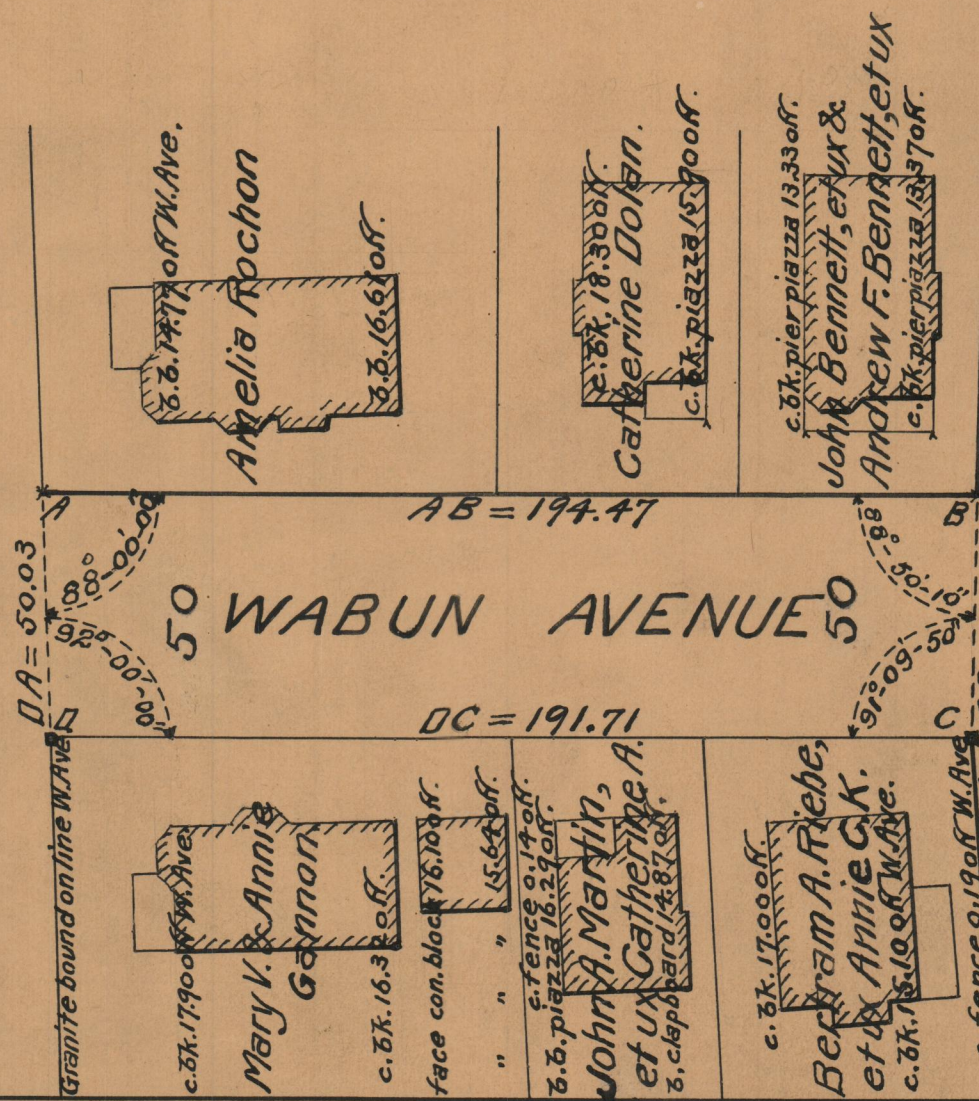
APRIL 18, 1929



Scale 1" = 40'

ACADEMY AVE.

ACADEMY



ST.

NELSON

| | |
|------------|-------|
| OFFICE No. | 24663 |
| DRAWER | 86 |
| SHEET | A-20 |