

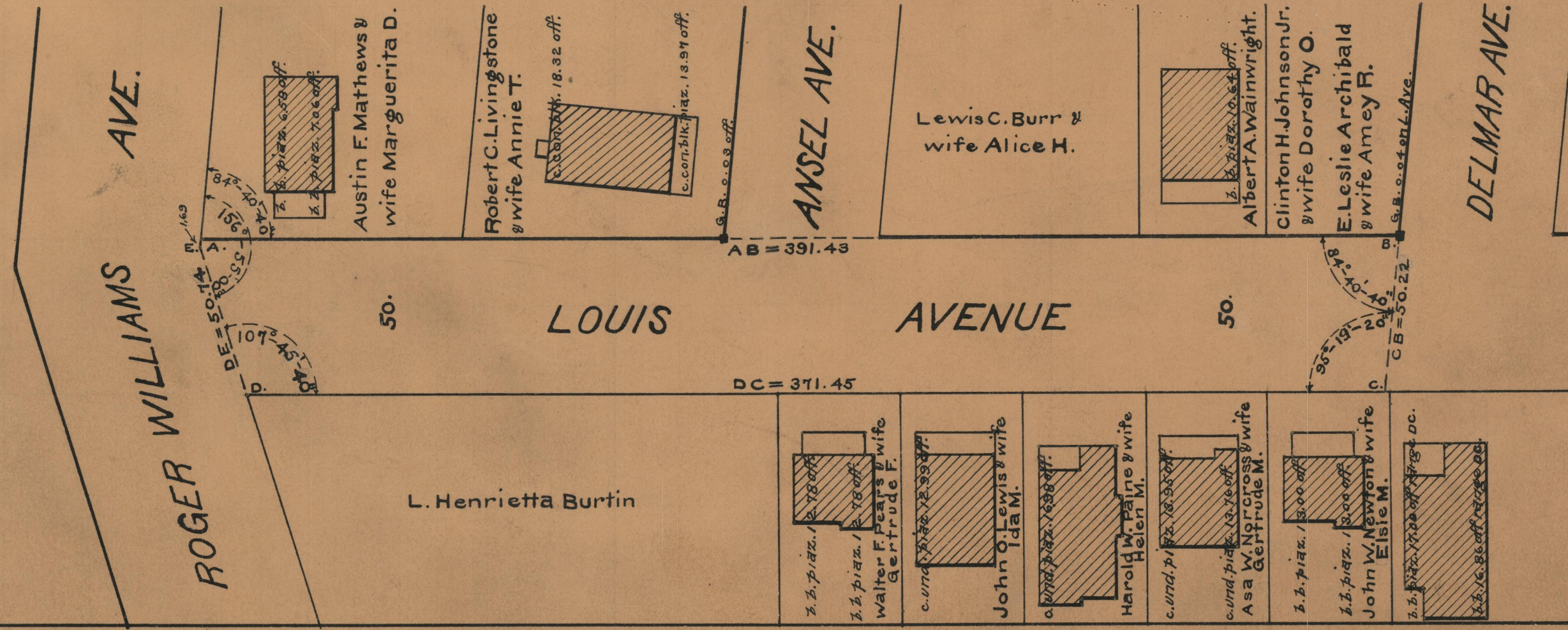
G.W.S. 2590-146

PLAT OF

# LOUIS AVENUE

FROM ROGER WILLIAMS AVE TO DELMAR AVE.  
SCALE 40 FEET PER INCH  
DECLARED A PUBLIC HIGHWAY BY RESOLUTION  
OF THE BOARD OF ALDERMEN  
AUGUST 2, 1928

PROVIDENCE, R.I.  
CITY ENGINEER'S OFFICE  
STREET LINE DEPT.  
Oct. 26, 1928.  
051167



OFFICE No. 27582  
 DRAWER " 86  
 SHEET " A-2