

L.P.R. 2646-46-7.

PROVIDENCE, R.I.
CITY ENGINEER'S OFFICE
STREET LINE DEPT.
Feb. 6, 1929.

051390

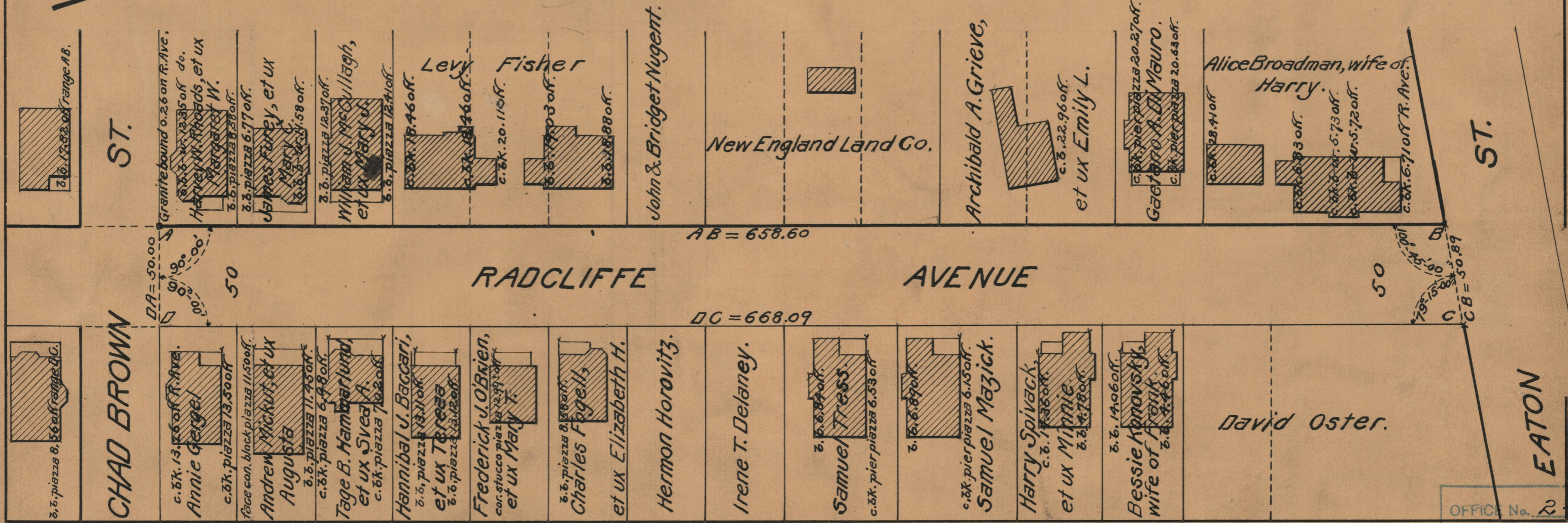
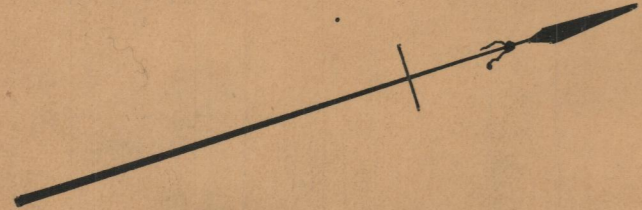
PLAT OF RADCLIFFE AVENUE

FROM CHAD BROWN ST. TO EATON ST.

BOARD OF ALDERMEN

FEBRUARY 21, 1929

Scale: 1" = 50'



OFFICE No.	24644
DRAWER	86
SHEET	A-19