

L.P.R. 2831-61  
L.P.R. 2646-62

PROVIDENCE, R.I.  
CITY ENGINEER'S OFFICE  
STREET LINE DEPT.  
Feb. 6, 1929.

051389

PLAT OF

# ERASTUS STREET

FROM YALE AVENUE TO NORTH LINE OF POMONA AVE

SCALE 40 FEET PER INCH

DECLARED AND ESTABLISHED A PUBLIC HIGHWAY BY RESOLUTION  
OF THE BOARD OF ALDERMEN

FEBRUARY 7, 1929

FROM POMONA AVE. TO CHAUCER ST.

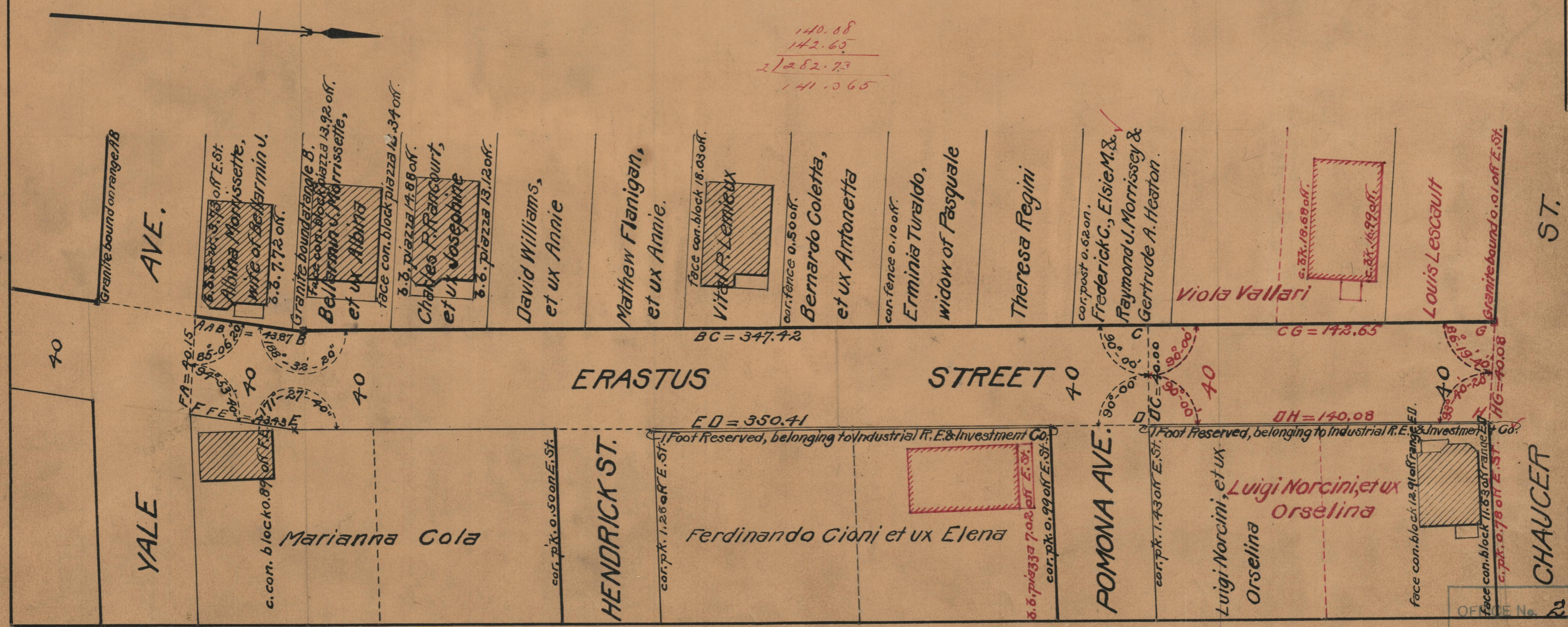
BOARD OF ALDERMEN

June 18, 1931.

140.88  
142.65  

---

21282.73  
141.065



OFFICE No.	24643
DRAWER	86
SHEET	A-18