

PLAT OF HOMER STREET

PROVIDENCE, R.I.
CITY ENGINEER'S OFFICE
STREET LINE DEPT.
Feb. 2, 1929.

FROM

BROAD ST. TO CACTUS ST.

IN TWO SHEETS

BOARD OF ALDERMEN

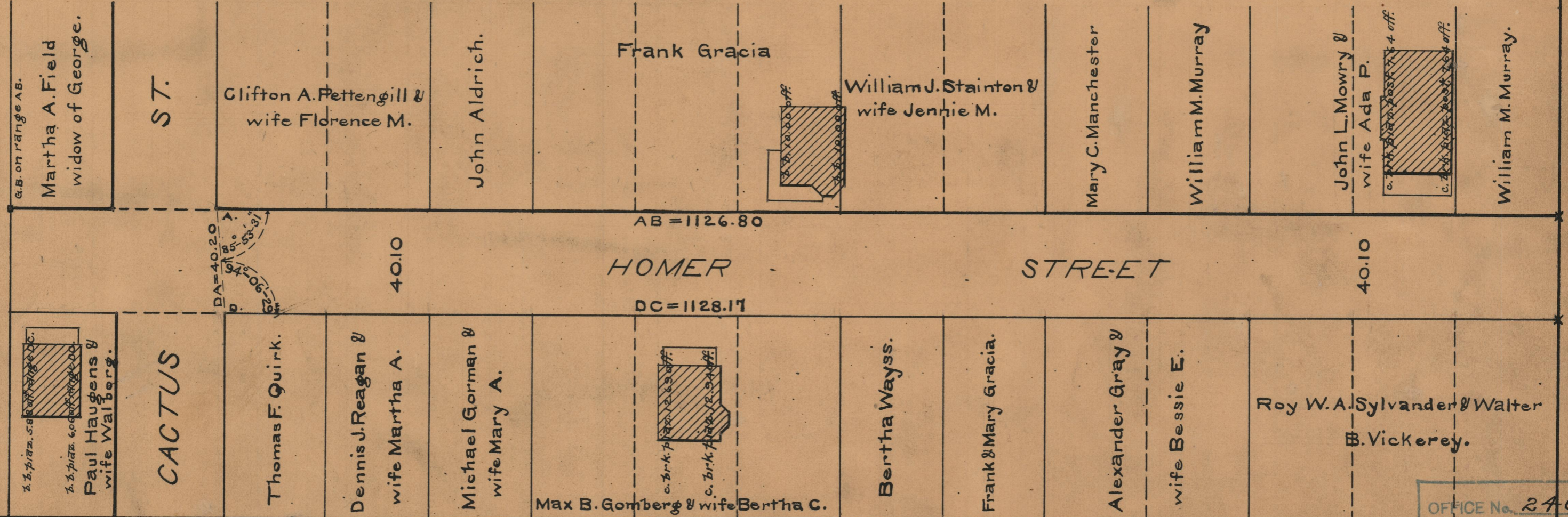
FEBRUARY 21, 1929

051388



Scale: 1" = 40'

ROGER WILLIAMS PARK



OFFICE No.	24642
DRAWER	86
SHEET	A-17