

PLAT OF

SIXTH STREET

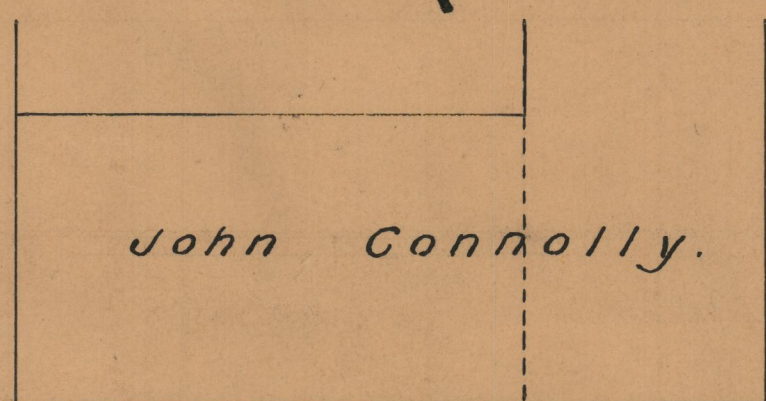
FROM NORTH MAIN ST. TO EAST LINE OF HIGHLAND AVE.

SCALE 40 FEET PER INCH

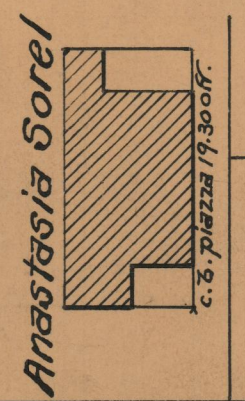
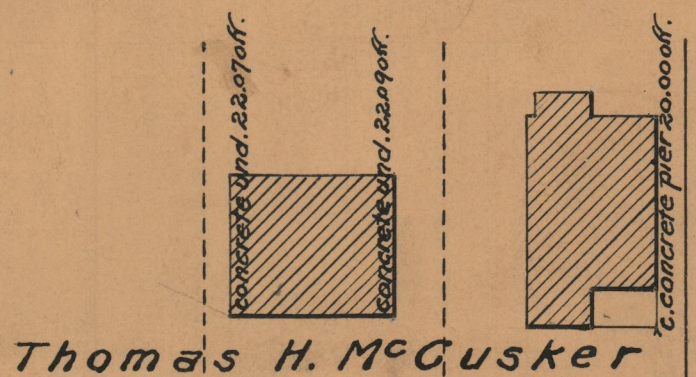
DECLARED AND ESTABLISHED A PUBLIC HIGHWAY BY RESOLUTION
OF THE BOARD OF ALDERMEN
FEBRUARY 7, 1929



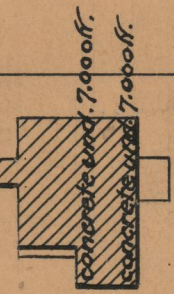
NORTH MAIN ST.



Alexander Kenyon,
et ux Agnes S.

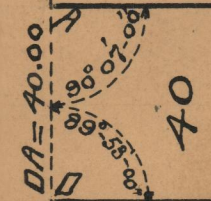
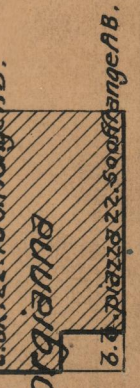


Charlotte B. Linton



AVE.

Eugene Picard, et ux

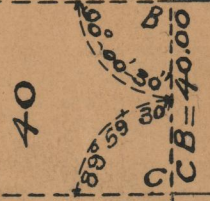


40

SIXTH STREET

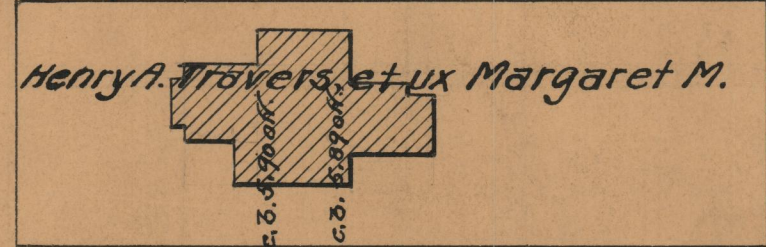
AB = 555.71

DC = 555.80

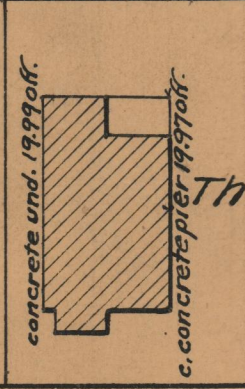


40

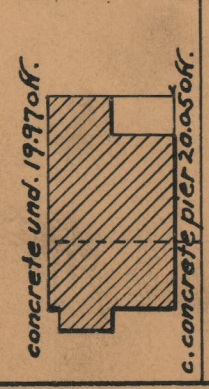
HIGHLAND



Joseph Hill, Est.



Thomas H. McGusker



William H. LeLacheure

Jewish Orphanage
of Rhode Island

OFFICE NO. 24618
DRAWER " 86
SHEET " A-15