

Note: The area declared and established as a public highway is indicated by the letters ABCDEFGA.

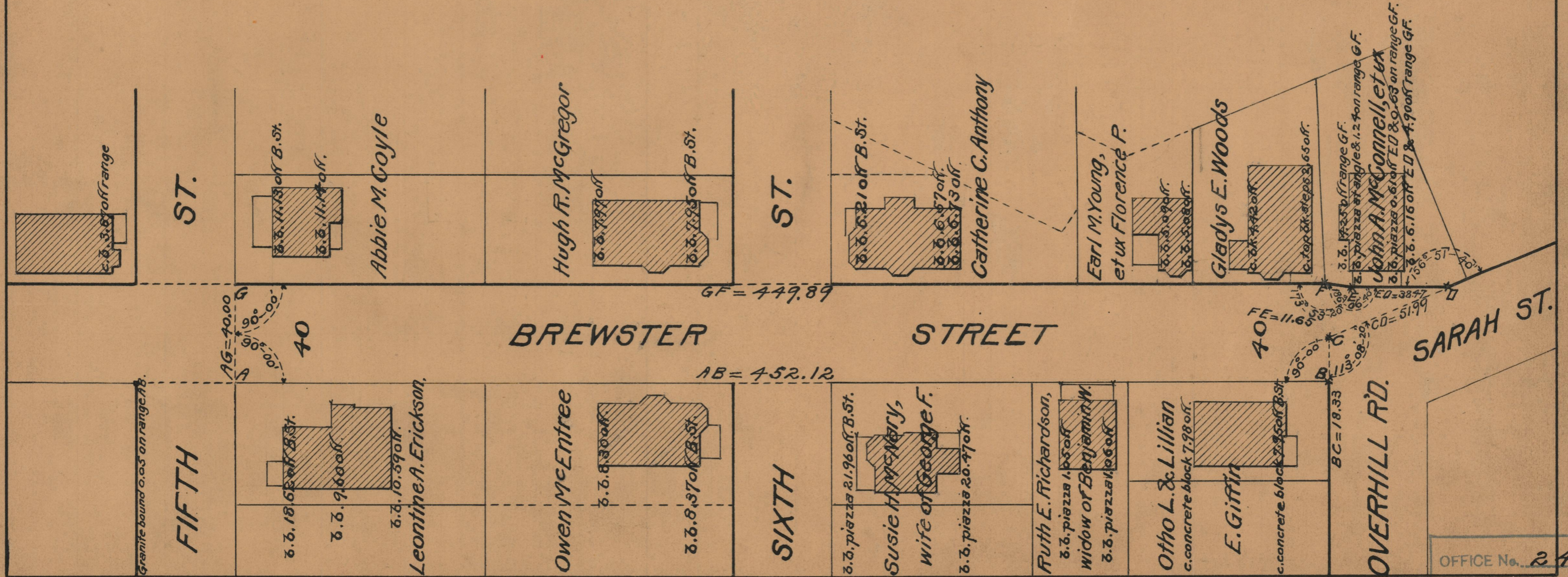
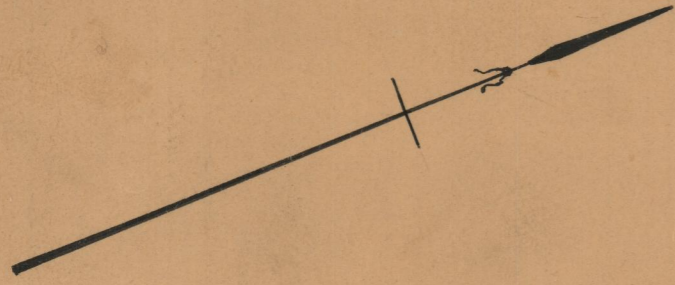
PLAT OF

# BREWSTER STREET

FROM FIFTH ST. TO OVERHILL ROAD

SCALE 40 FEET PER INCH

DECLARED AND ESTABLISHED A PUBLIC HIGHWAY BY RESOLUTION OF THE BOARD OF ALDERMEN  
FEBRUARY 7, 1929



OFFICE No. 24617  
 DRAWER " 86  
 SHEET " A-14