

T.F.C. 2496-140

PROVIDENCE, R.I.
CITY ENGINEER'S OFFICE

STREET LINE DEPT.
Dec. 28, 1928.

051315

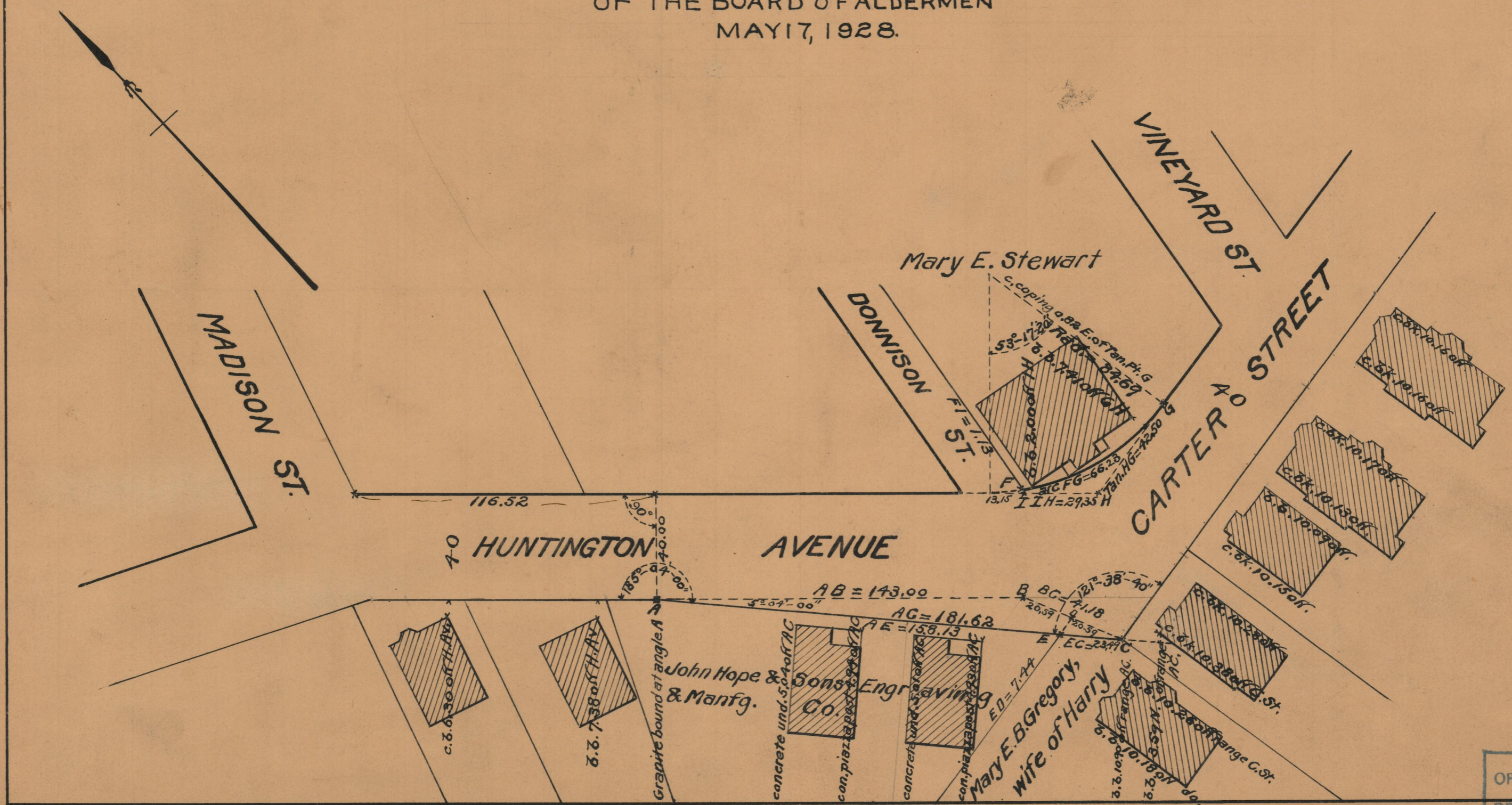
Note: The three parcels of land declared
a public highway are indicated by the letters
ABDEA; CDEG; FGHI.

PLAT OF PORTIONS OF HUNTINGTON AVENUE

AND

CARTER STREET

SCALE 40 FEET PER INCH
DECLARED A PUBLIC HIGHWAY BY RESOLUTION
OF THE BOARD OF ALDERMEN
MAY 17, 1928.



OFFICE No.	24392
DRAWER	86
SHEET	A-13