

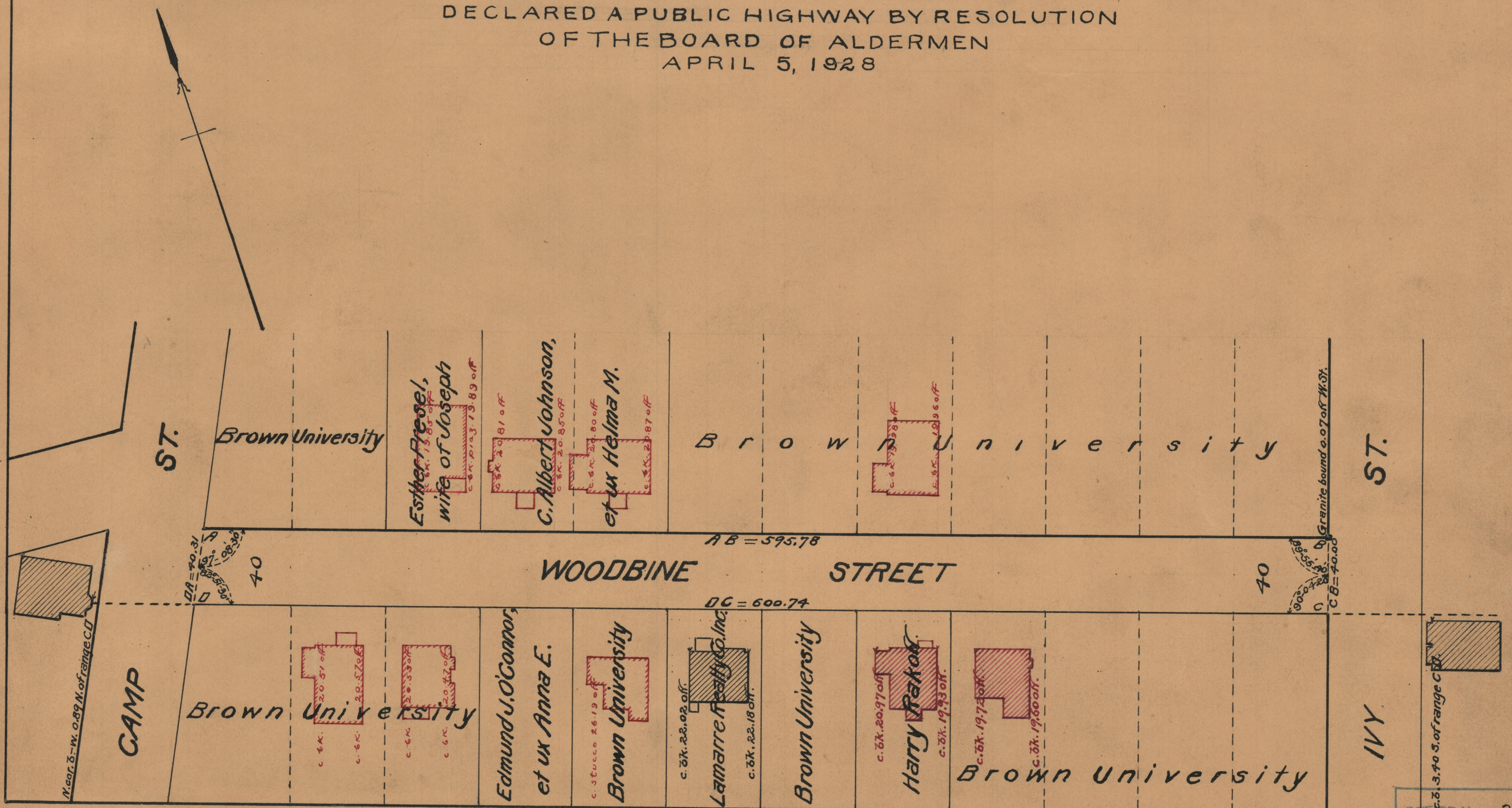
# PLAT OF WOODBINE STREET

FROM CAMP ST. TO IVY ST.  
SCALE 50 FEET PER INCH  
DECLARED A PUBLIC HIGHWAY BY RESOLUTION  
OF THE BOARD OF ALDERMEN  
APRIL 5, 1928

L. P. R. 2579 - 100

PROVIDENCE, R. I.  
CITY ENGINEER'S OFFICE  
STREET LINE DEPT.  
*Dec. 28, 1928.*

051291



OFFICE No. 23809  
DRAWER " 86  
SHEET " A-12