

Providence, R.I.  
 This plat accompanies  
 our report of this date.

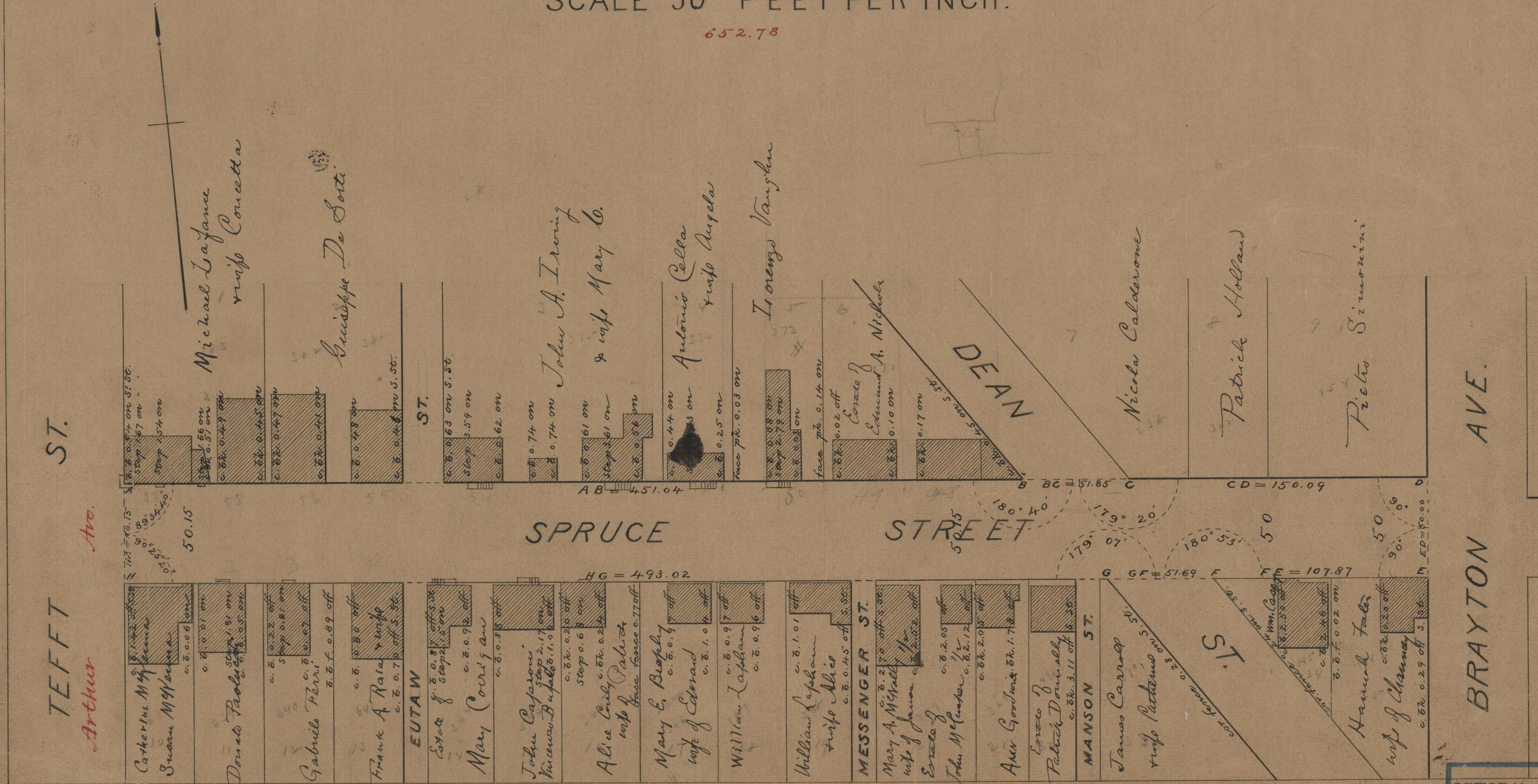
O. O. Mumford Eng.  
 B15-168  
 FEB 15 1892  
 PROVIDENCE, R.I.  
 CITY ENGINEER'S OFFICE  
 STREET LINE DEPT.  
 Jan. 14, 1892  
 018790

# PLAT OF SPRUCE STREET

FROM TEFFT ST. TO BRAYTON AVE.

SCALE 50 FEET PER INCH.

652.78



TEFFT ST.  
 Arthur

OFFICE No. 11083  
 DRAWER 82  
 SHEET

85  
 B79