

*W. S. Mansford*

F.B.B. XV-177

PROVIDENCE, R.I.  
CITY ENGINEER'S OFFICE  
STREET LINE DEPT.

Dec. 10. 1891

018698

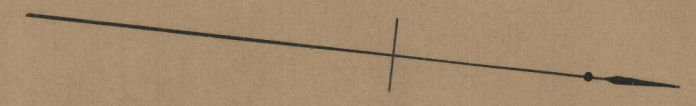
Providence, R.I.-----  
This plat accompanies  
our report of this date.

# PLAT OF PEMBERTON STREET

FROM DOVER ST. TO BEAUFORT ST.

SCALE 50 FEET PER INCH

*250.03*

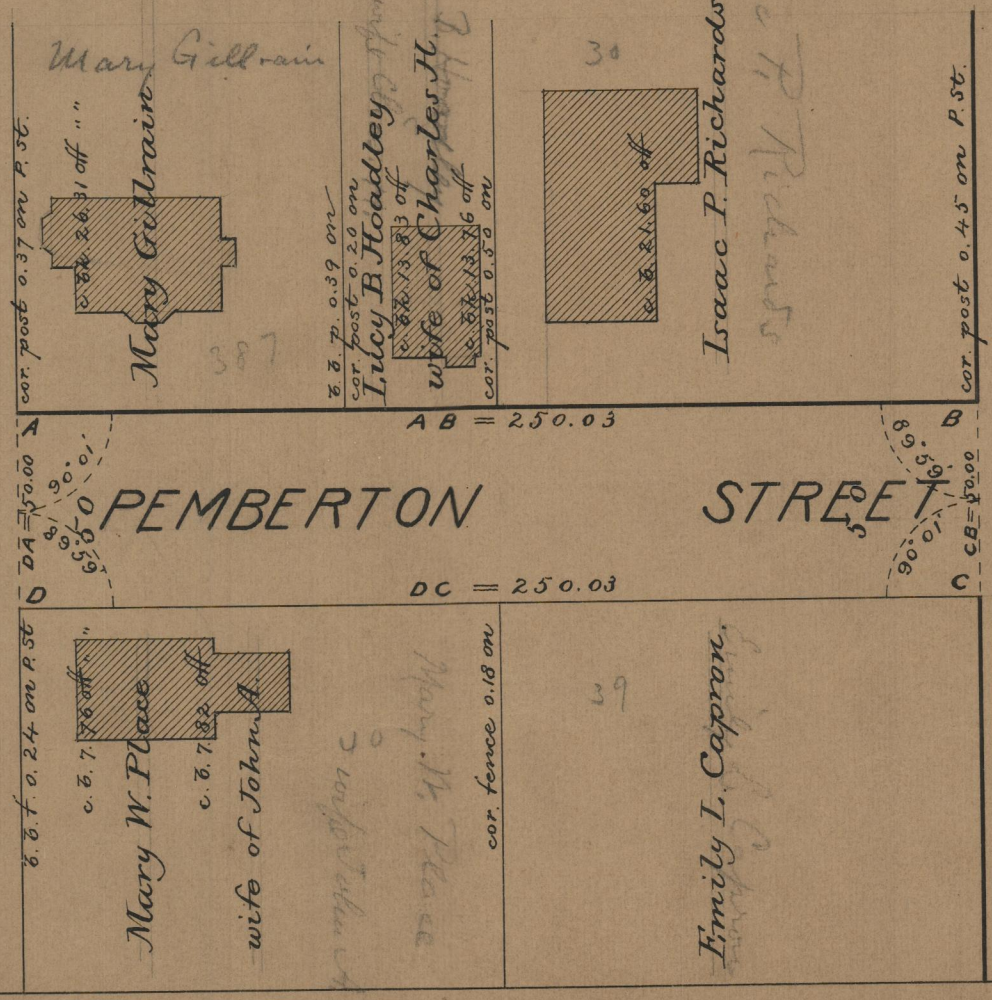


ST.

DOVER

ST.

BEAUFORT



DA = 50.00  
 DC = 250.03  
 AB = 250.03  
 CB = 50.00

Cor. post 0.37 on P. St.  
 Cor. post 0.24 on P. St.  
 Cor. fence 0.18 on  
 Cor. post 0.45 on P. St.

Mary Gillrain  
 wife of Charles H.  
 Isaac P. Richards  
 Mary W. Place  
 wife of John A.

OFFICE No. 11071  
 DRAWER " 85  
 SHEET " B-

*85*  
*875*