

Providence, R. I.
This plat accompanies
our report of this date.

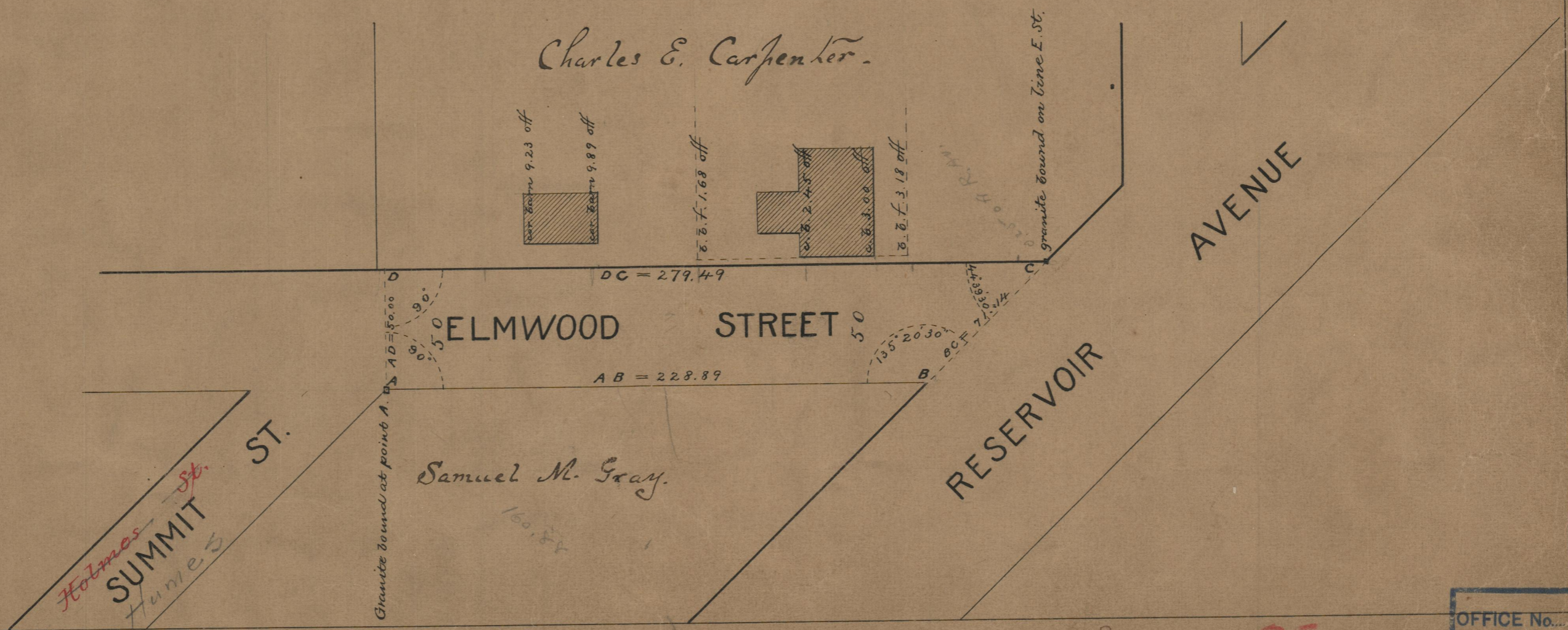
PLAT OF
ELMWOOD STREET
FROM SUMMIT ST. TO RESERVOIR AVE.
SCALE 50 FEET PER INCH.

25-4.19

PA-16-74
FBB-XVI-75
PROVIDENCE, R. I.
CITY ENGINEER'S OFFICE
STREET LINE DEPT.
Dec 5, 1891
018682

7.246450
2.309627
2.206507
= 160.84
7.246450
2.309627
2.206507
= 160.84

Changed to Algonquin St Dec. 7, 1899.



47.064
47.58
0.5158
14.50
22.50
0.5158
0.211

Holmes
SUMMIT St.
Hume

85
B-73

85
B-73

OFFICE No. 1106
DRAWER " 85
SHEET 37