

Nov. 21, 1891

018641

Providence, R.I.
This plat accompanies
our report of this date.

PLAT OF NORTH STREET

FROM NORTH MAIN ST. TO OLNEY ST.

IN FOUR SHEETS

SCALE 80 FEET PER INCH

Changed to Rochambeau Avenue.

Aug. 25, 1893.

*The area defined by the letters ABF
declared a public highway May 17, 1928.*

*Rochambeau Ave.
Sub Sketch*

*See Sub Sketch
with hole in base stone
of wall at angle.*

*Elizabeth A. Gammell
Cole Ave.
Granite bound at angle.*

*Elizabeth A. Gammell
Bolton Rd.*

*Estate of
William Perry.
face wall 12.50 in.
Granite bound at angle.*

*Estate of
William Perry.*

*STREET
NORTH
EF = 467.05
JI = 453.98*

FG = 323.05

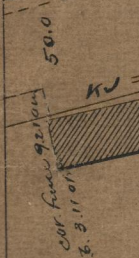
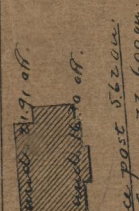
IH = 276.25

Estate of Stephen Dexter.

*Decided for Highway Purposes
Sept. 22, 1928. O.B. 718 p. 184*

ELMGROVE

OLNEY ST.



OFF

85
P-7

85
B-71