

SHEET TWO

Providence, R. I.  
This plat accompanies  
our report of this date.

# PLAT OF NORTH STREET

FROM NORTH MAIN ST. TO OLNEY ST.

IN FOUR SHEETS

SCALE 80 FEET PER INCH.

PROVIDENCE, R. I.  
CITY ENGINEER'S OFFICE  
STREET LINE DEPT.

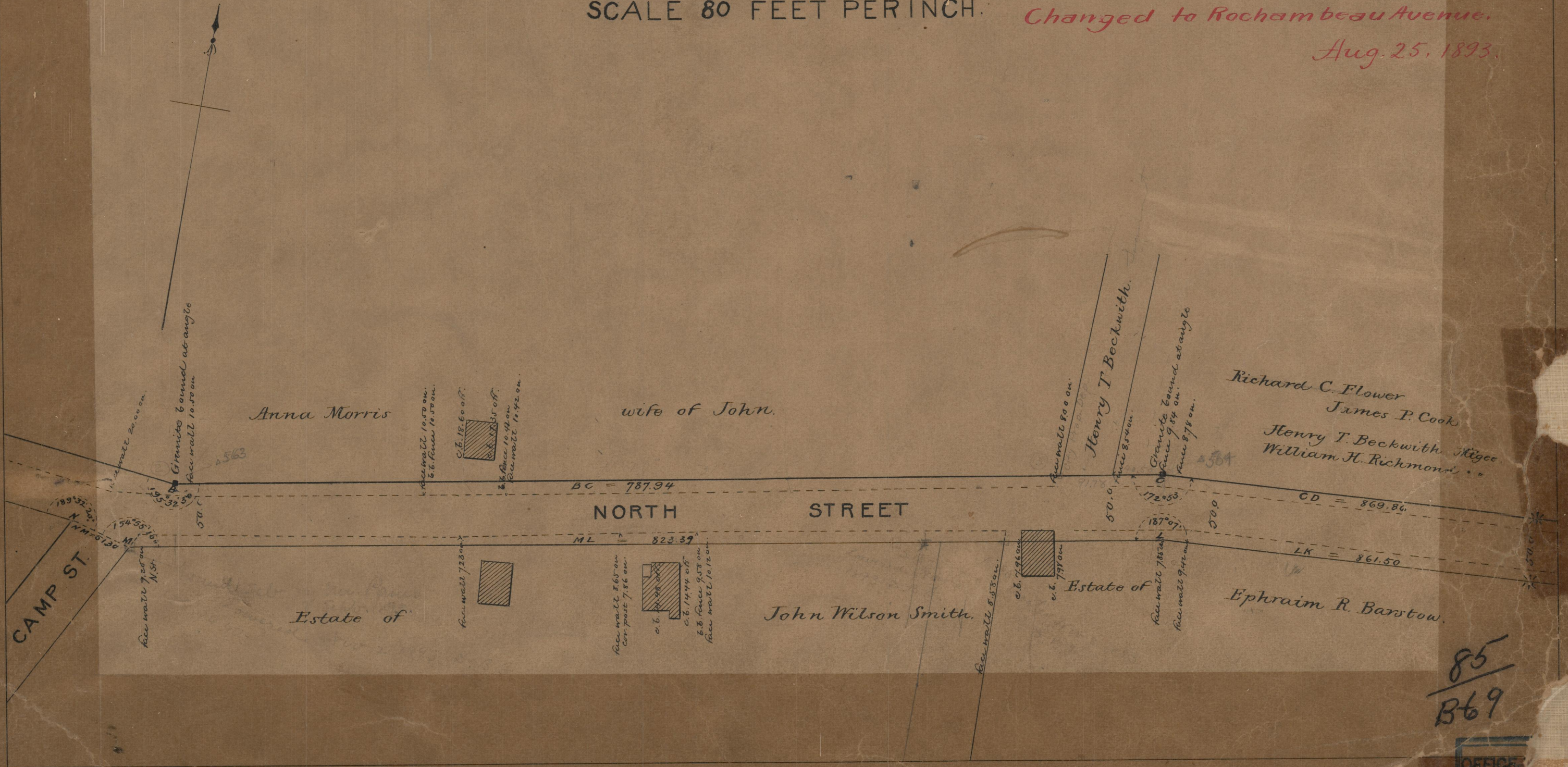
Nov. 21, 1891

018639

*Changed to Rochambeau Avenue.*

*Aug. 25, 1893.*

*85  
B-*



*85  
B69*

OFFICE  
DRAW

*85  
B-1*

*85  
B-69*