

PROVIDENCE, R.I.  
CITY ENGINEER'S OFFICE  
STREET LINE DEPT.  
Oct. 30 1891

018560

PLAT OF

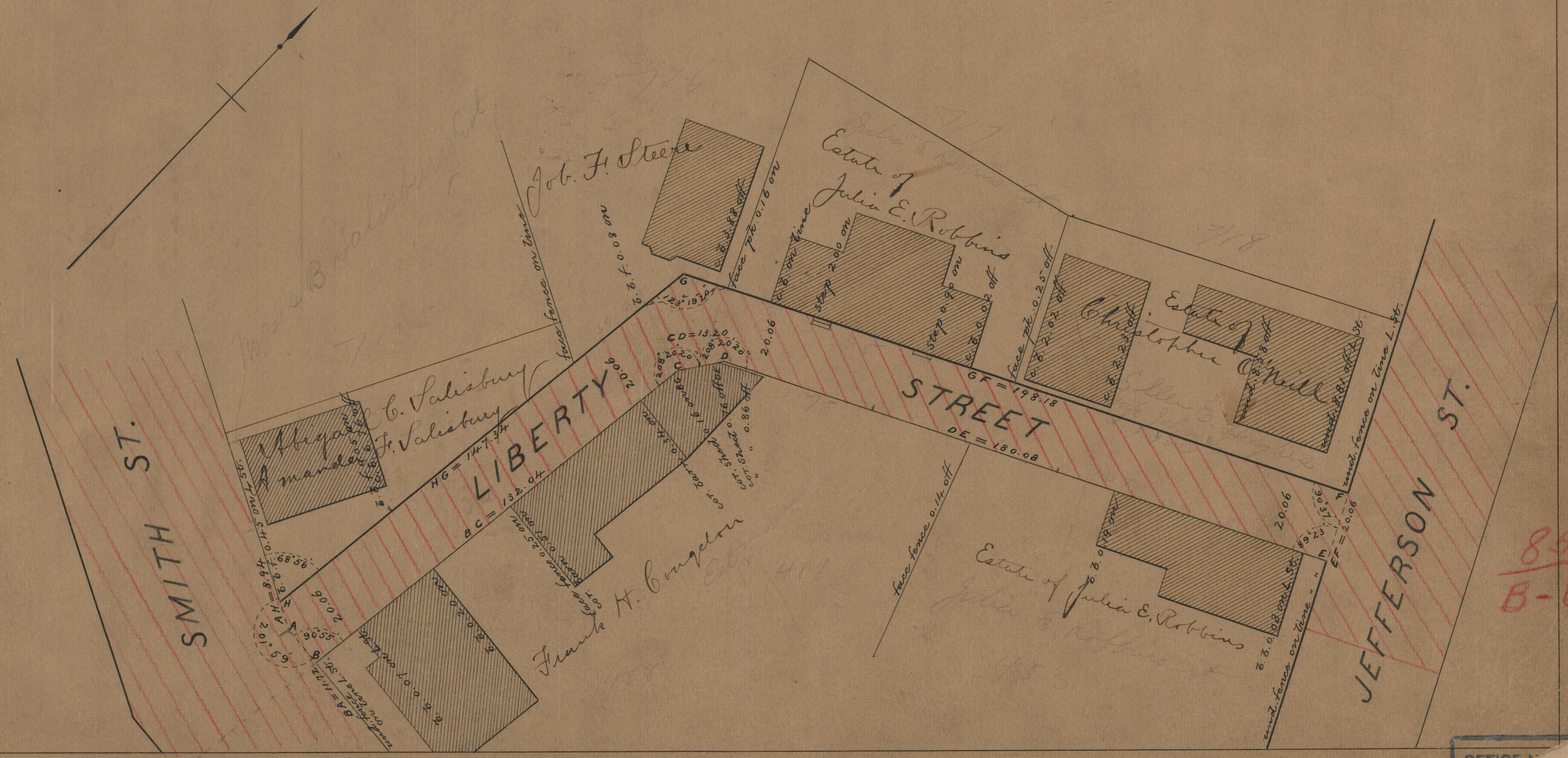
# LIBERTY STREET

FROM SMITH ST. TO JEFFERSON ST.

SCALE 30 FEET PER INCH.

*condemnation for Freeway*

Providence R.I.  
This plat accompanies  
our report of this date.



OFFICE

85  
B-62

85  
B-62

6

17.44 to corner of Park St  
measured by E. J. Steere Jan 39 1897