

Sept. 18, 1891

018384

Providence, R.I.
This plat accompanies
our report of this date.

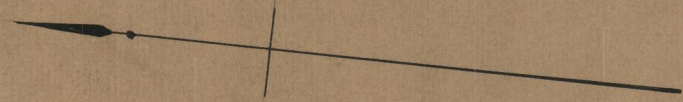
PLAT OF GANO STREET

FROM WICKENDEN ST. TO PITMAN ST.

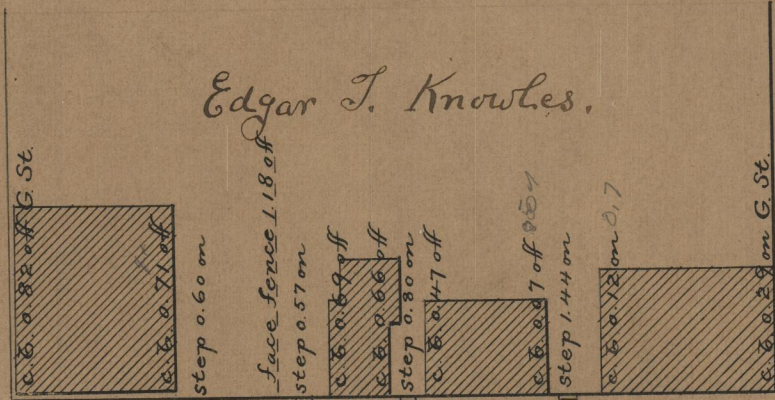
IN THREE SHEETS

SCALE 50 FEET PER INCH.

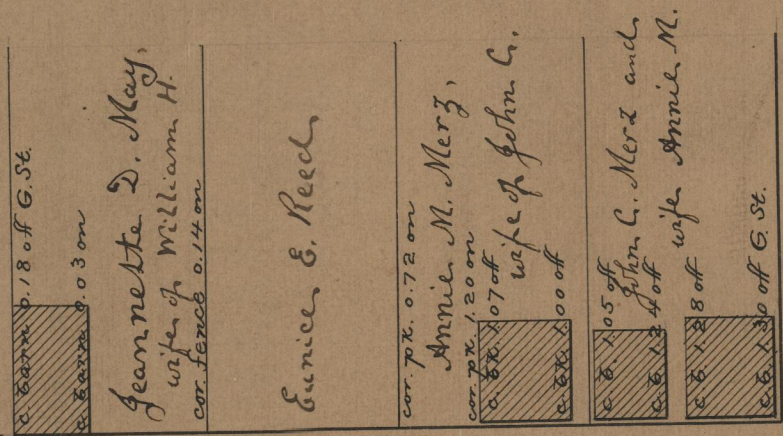
2184.87
2181.84
C.W. 2181.85 +



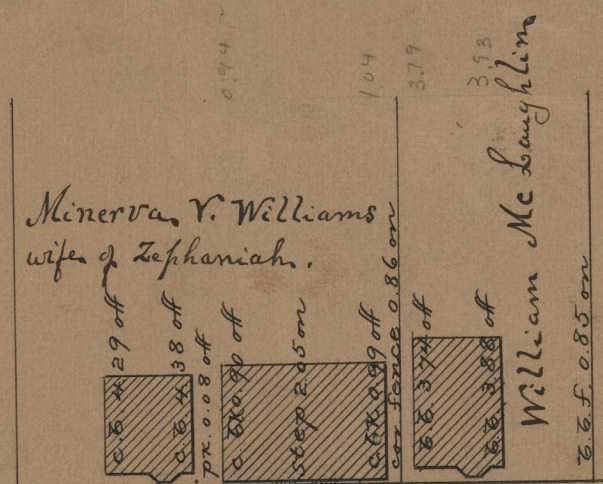
PITMAN ST.



ST.



ST.



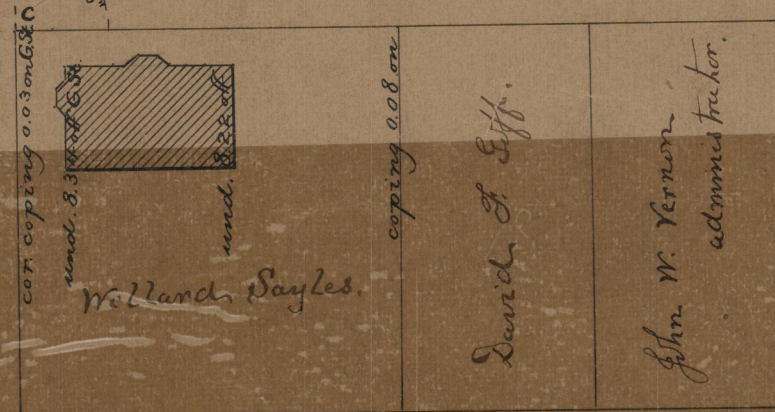
ST.

GANO STREET

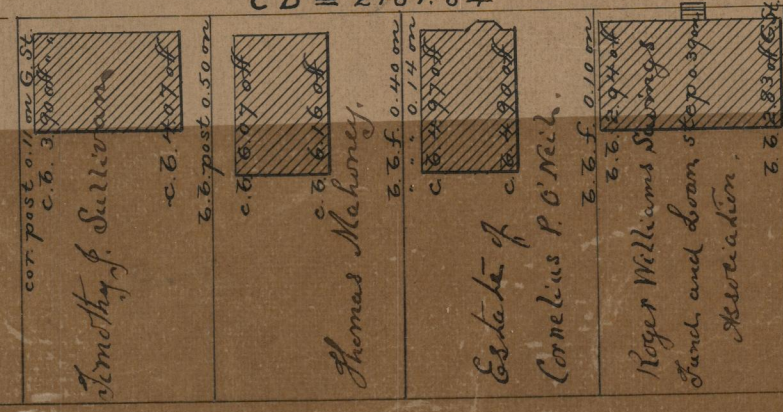
BA = 2181.87

CD = 2181.84

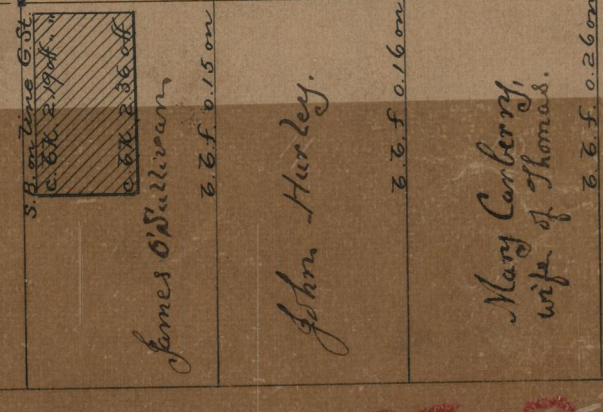
PITMAN



E. GEORGE



AMY



Edward Roche

PRESTON

50

OFFICE No. 109.
DRAWER
SHEET

85-B-55

85
B-55