

PROVIDENCE, R. I.  
CITY ENGINEER'S OFFICE  
STREET LINE DEPT

Aug. 13, 1891

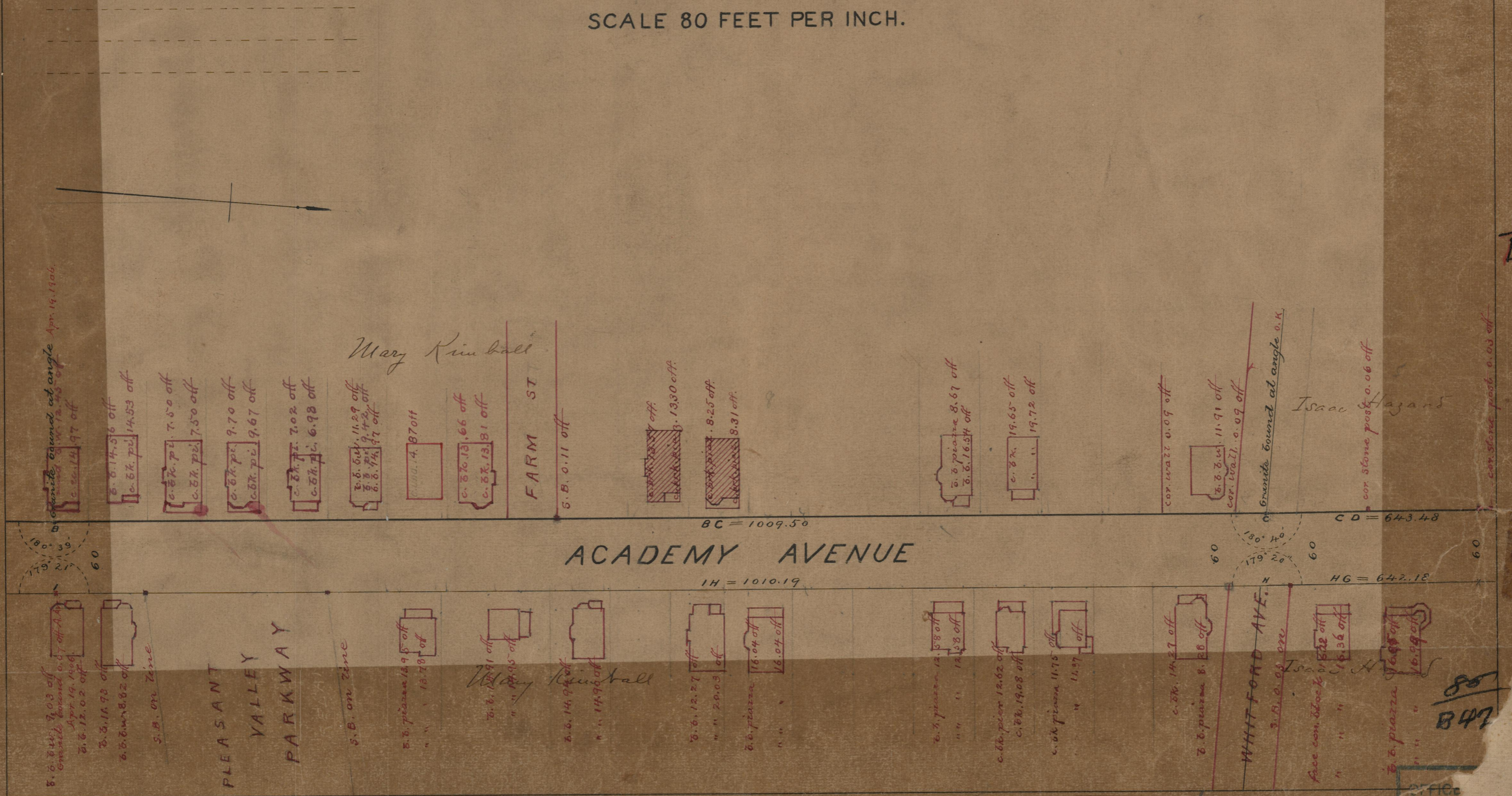
018227

Providence R.I.  
This plat accompanies  
our report of this date.

# PLAT OF ACADEMY AVENUE

FROM POINT ALREADY LAID OUT TO SMITH ST.

SCALE 80 FEET PER INCH.



85  
B-47

85  
B47

85  
B-47

85  
B-47

85