

Providence R. I.
This plat accompanies
our report of this date.

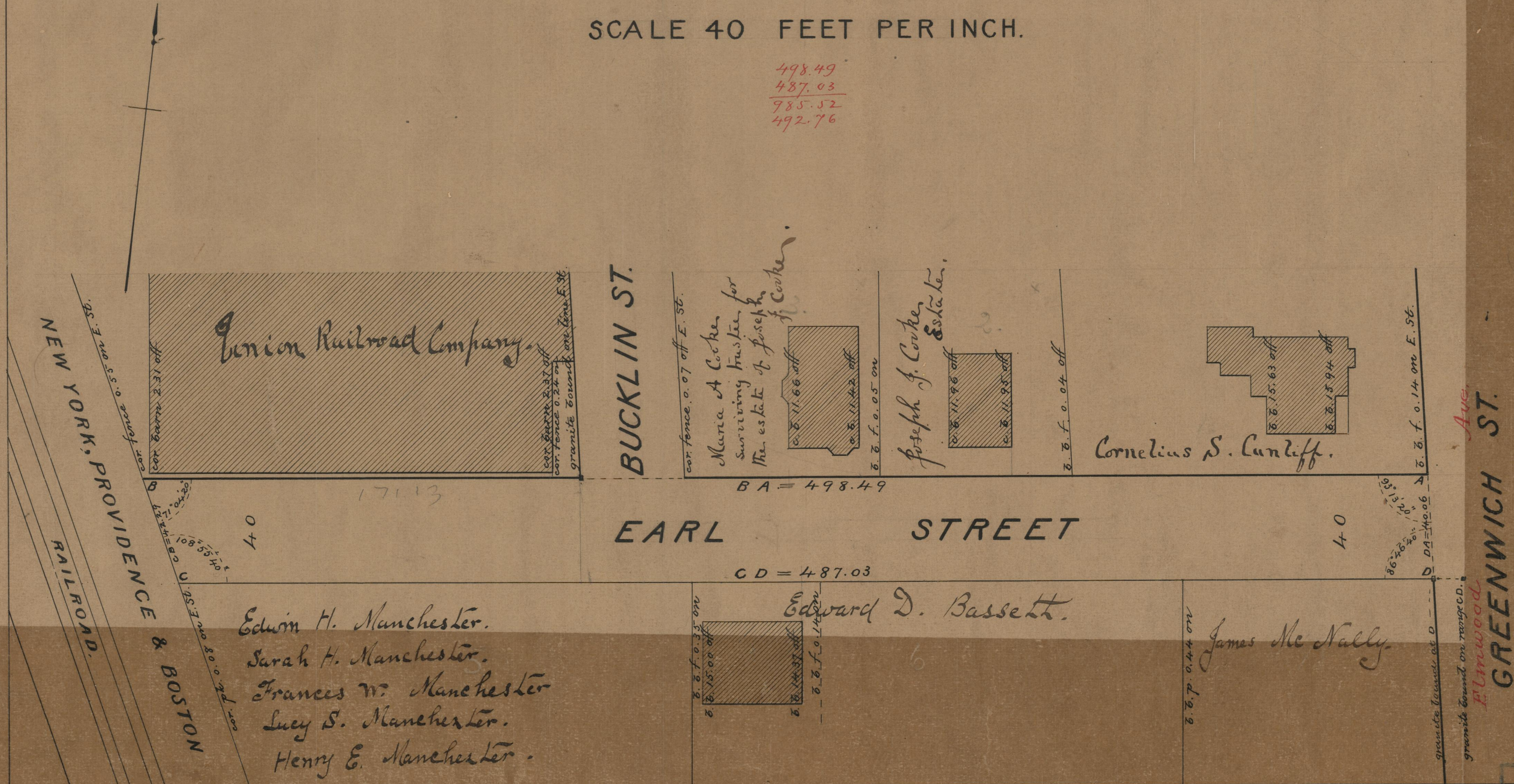
PLAT OF EARL STREET

FROM GREENWICH ST. TO
EAST LINE OF N. Y. P. & B. R. R.

SCALE 40 FEET PER INCH.

815
F.B. XV-138
PROVIDENCE, R. I.
CITY ENGINEER'S OFFICE
STREET LINE DEPT
June 12, 1891
017898

498.49
487.03
985.52
492.76



NEW YORK, PROVIDENCE & BOSTON RAILROAD.

Union Railroad Company.

BUCKLIN ST.

Maria A. Cooke
surviving trustee for
the estate of Joseph
H. Cooke.

Joseph J. Cooke
Estate.

Cornelius S. Cunliff.

Edwin H. Manchester.
Sarah H. Manchester.
Frances W. Manchester
Lucy S. Manchester.
Henry E. Manchester.

Edward D. Bassett.

James Mc Nally.

GREENWICH ST.

85
B-39

85
B-39

85
B-39

OFFICE No. 10359
DRAWER 8
SHEET B-39