

Providence R. I.  
This plat accompanies  
our report of this date.

# PLAT OF DOUGLAS STREET

FROM IVES ST. TO BUTLER AVE.

IN THREE SHEETS

SCALE 50 FEET PER INCH.

PROVIDENCE, R. I.  
CITY ENGINEER'S OFFICE  
STREET LINE DEPT

May 29, 1891

017853

*Changed to Medway Street, Aug. 2, 1894.*



*Ave.*  
ST.

*granite bound on line D. St.  
post 0.48 off D. St.*

*Stephen H. Arnold  
and Royal C. Taft, trustees*

*face fence 0.04 off*

*Frank E. Stillwell,  
Lewis D. Stillwell,  
Charles M. Stillwell,  
Mary B. S. Coffin,  
Janette H. Tompkins,  
                  wife of Horace R.*

*face fence 0.52 off*

*post 1.24 off*

*Charlotte H. Wiley.*

*William H. Dike.*

*Henry L. Aldrich.*

*John T. Fiske, Jr.*

*granite bound on line D. St.*

EF = 807.72

DOUGLAS STREET

HG = 807.71

50

*Radius = 729.80*

*Wayland*  
WAYLAND

*post 1.35 on D. St.*

*Stephen H. Arnold  
and Royal C. Taft,  
trustees.*

*face fence 0.30 on*

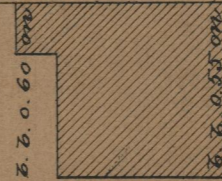
*James M. Campbell*

*face fence 1.80 on*

*mil 0.68 on*

*John P. Campbell*

*cor. fence 0.54 on*



*Harriet Fletcher  
wife of Charles.*

*granite bound on line D. St.*

BUTLER AVE.  
85  
B-35

*85  
B-35*

OFFICE No. 108  
DRAWER 8  
SHEET B-35