

Providence R.I.
This plat accompanies
our report of this date.

PLAT OF DOUGLAS STREET

FROM IVES ST. TO BUTLER AVE.

IN THREE SHEETS

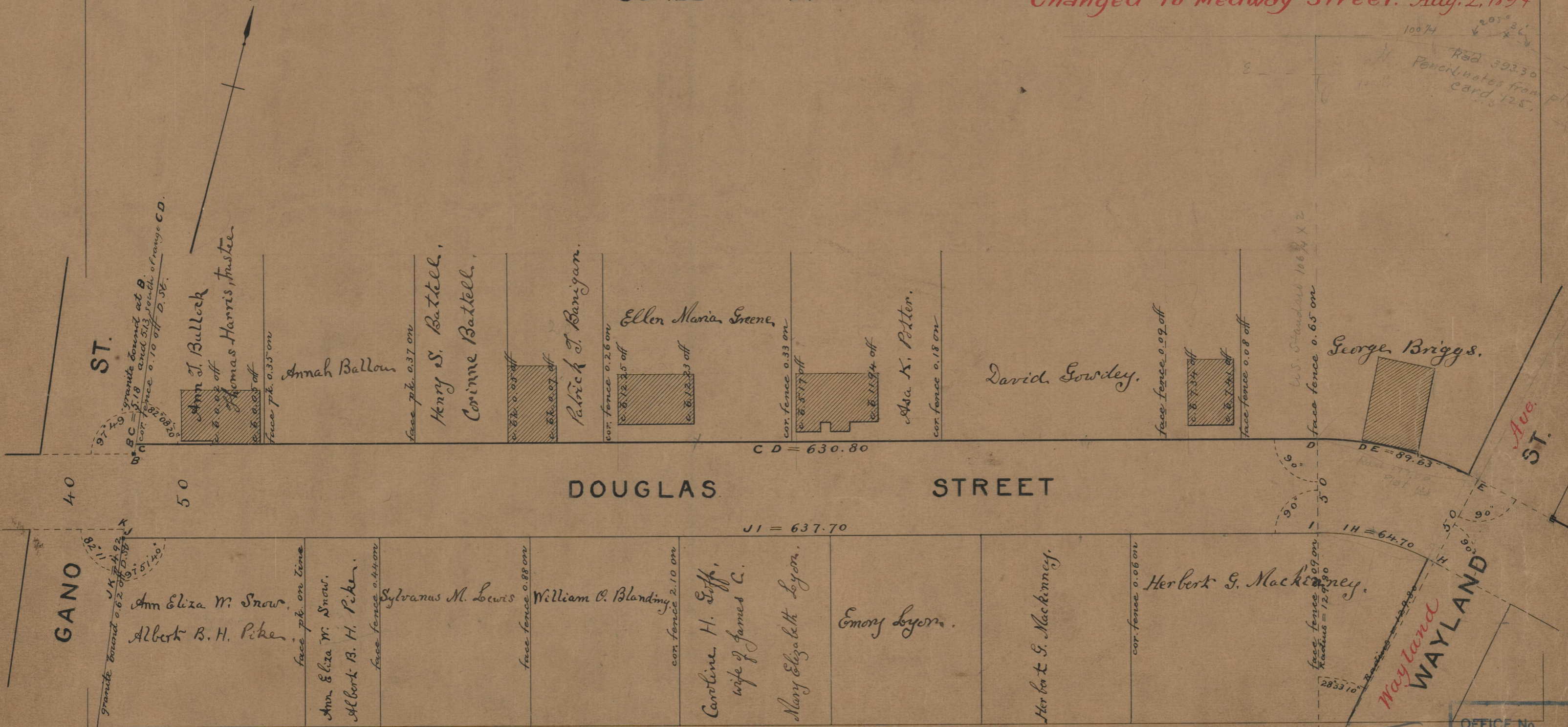
SCALE 50 FEET PER INCH.

Changed to Medway Street. Aug. 2, 1894

PROVIDENCE, R. I.
CITY ENGINEER'S OFFICE
STREET LINE DEPT

May 29, 1891.

017852



OFFICE No.	1085
DRAWER	85
SHEET	B 34

85
B34