

9-15-1894-6 L. D. S. Eng

FRB-XV-134-6

PROVIDENCE, R. I.

CITY ENGINEER'S OFFICE
STREET LINE DEPT.

May 29, 1891

017851

Providence R.I.
This plat accompanies
our report of this date.

PLAT OF DOUGLAS STREET

FROM IVES ST. TO BUTLER AVE.

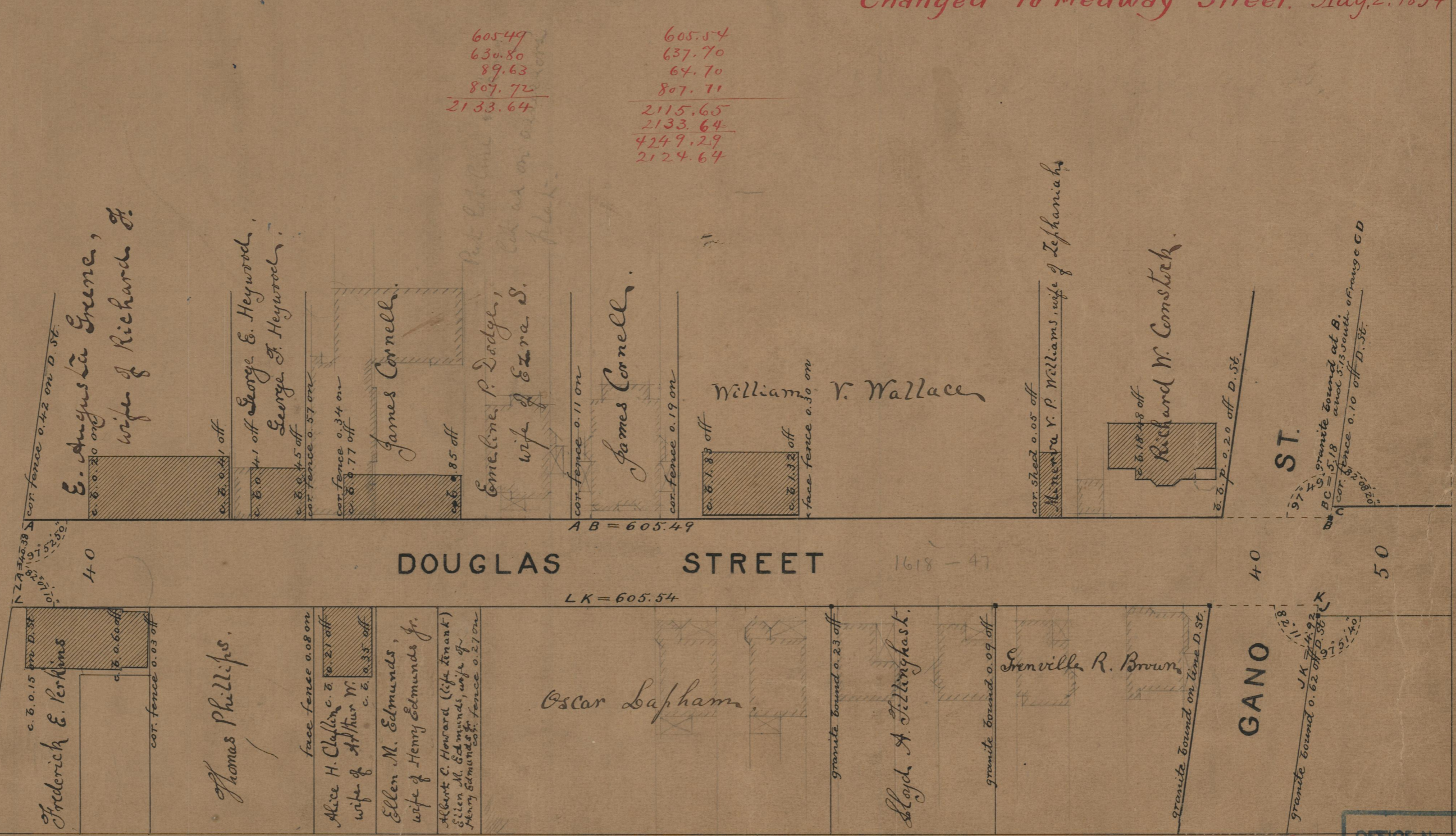
IN THREE SHEETS

SCALE 50 FEET PER INCH.

Changed to Medway Street. Aug. 2, 1894

605.49	605.54
630.80	637.70
89.63	64.70
807.72	807.71
<u>2133.64</u>	<u>2115.65</u>
	2133.64
	<u>4249.29</u>
	2124.64

IVES ST.



AB = 605.49

DOUGLAS STREET

LK = 605.54

ST.

GANO

85
B33

OFFICE No. 1085
DRAWER 85
SHEET B

85
B33