

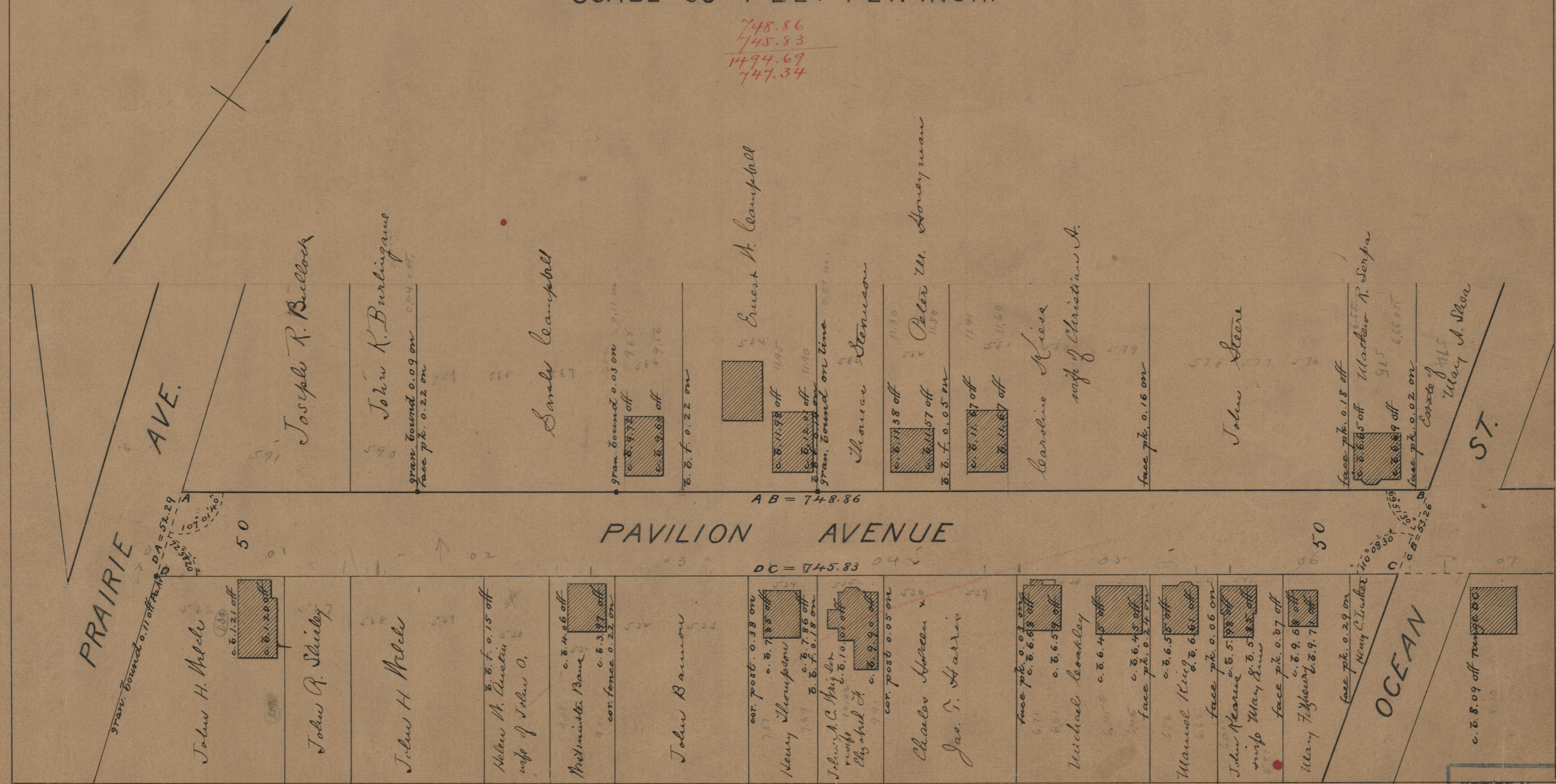
Providence, R.I.  
This plat accompanies  
our report of this date.

PROVIDENCE, R. I.  
CITY ENGINEER'S OFFICE  
STREET LINE DEPT  
Apr. 16, 1891  
017692

# PLAT OF PAVILION AVENUE

FROM PRAIRIE AVE. TO OCEAN ST.  
SCALE 60 FEET PER INCH.

748.86  
745.83  
1494.69  
747.34



PRAIRIE AVE.  
gran. bound 0.11 off  
PA = 52.29

Joseph R. Bullock

John K. Burlingame  
gran. bound 0.09 on  
face pt. 0.22 on

Ernest A. Campbell

gran. bound 0.03 on  
c. 8.97 off  
c. 8.80 off  
gran. bound on line

Ernest A. Campbell

Thrace Stenerson

Peter M. Honeyman  
c. 8.77 off  
c. 8.57 off  
c. 8.05 on

Caroline Niess  
wife of Christian A.

face pt. 0.16 on

John Score

face pt. 0.18 off  
c. 8.65 off  
c. 8.09 off  
face pt. 0.02 on

Walter T. Senpa  
Mary A. Shea

John H. Meele  
c. 8.12 off  
c. 8.20 off

John R. Shirley

John H. Meele

Melba M. Austin  
wife of John O.  
c. 8.46 off  
c. 8.37 off  
cor. fence 0.22 on

John Bamour

John Bamour

Henry Thompson  
cor. post 0.38 on  
c. 8.73 off  
c. 8.78 off

John A. C. Miller  
wife of Charles A.  
c. 8.10 off  
c. 8.80 off

Charles Hadden  
cor. post 0.05 on  
c. 8.45 off  
face pt. 0.24 on

Michael Conroy  
face pt. 0.09 on  
c. 8.68 off  
c. 8.59 off

Manuel King  
c. 8.55 off  
face pt. 0.06 on

John Mearns  
wife Mary E.  
c. 8.55 off  
face pt. 0.07 off

Mary Fitzhugh  
c. 8.96 off  
c. 8.97 off

face pt. 0.29 on  
Henry C. Inbar

OCEAN ST.

c. 8.09 off

OFFICE No. 108  
DRAWER " 8  
SHEET " A 30

85  
B-30

85  
B-30

111-57-64  
69-51-30  
113-08-30