

Providence R. I.
This plat accompanies
our report of this date.

PROVIDENCE, R.I.
CITY ENGINEER'S OFFICE
STREET LINE DEPT.

April 20, 1892

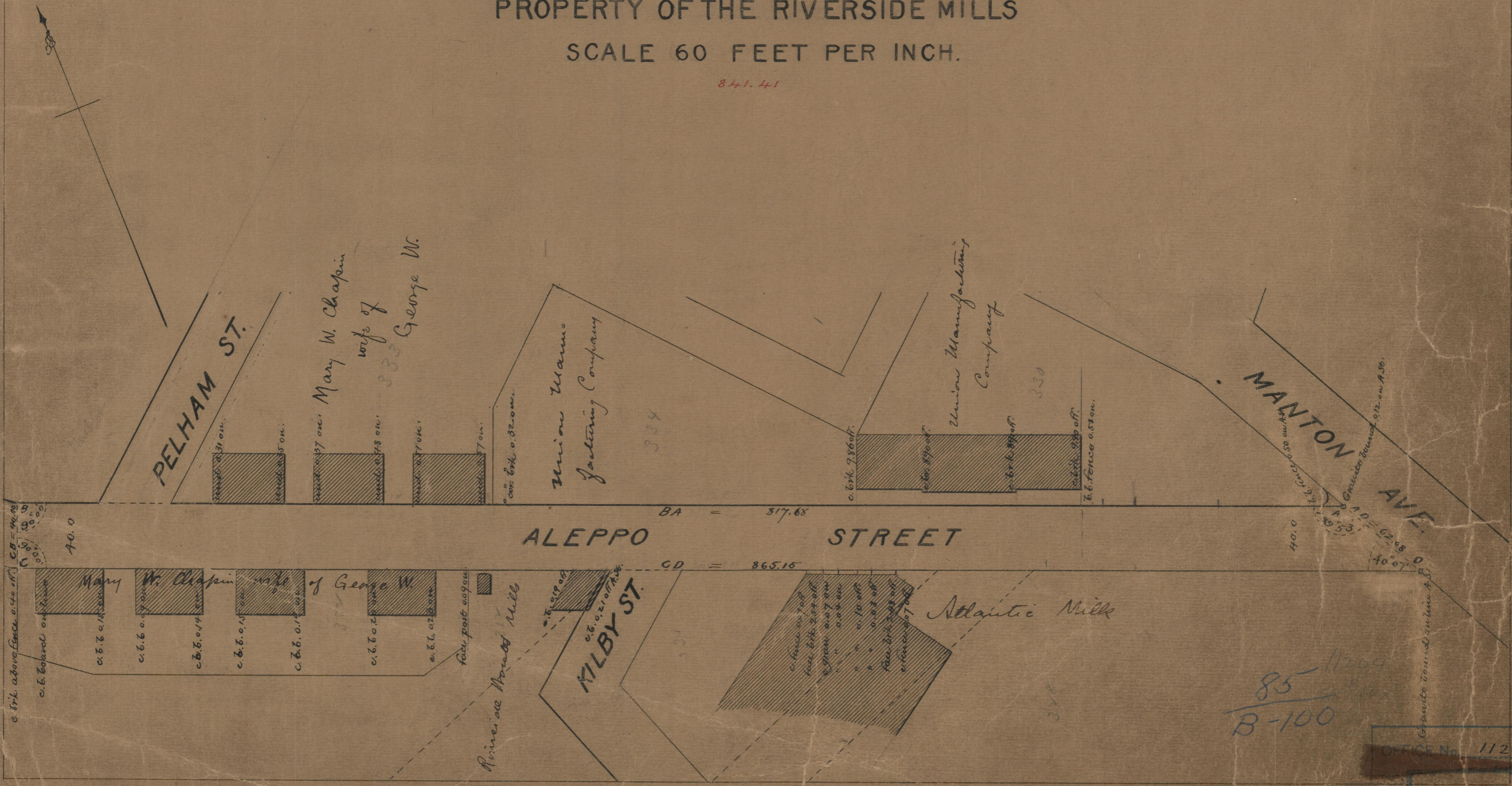
019144

PLAT OF ALEPPO STREET

FROM MANTON AVE TO
PROPERTY OF THE RIVERSIDE MILLS

SCALE 60 FEET PER INCH.

841.41



BA = 317.68

CD = 365.10

Granite bound 0.12 on A. 58.
A.D. = 62.58
40° 07'

85-11204
B-100

OFFICE No. 11204

OFFICE No. 11204

85