

Providence, R.I.
This plat accompanies
our report of this date.

PLAT OF PEARCE AVENUE

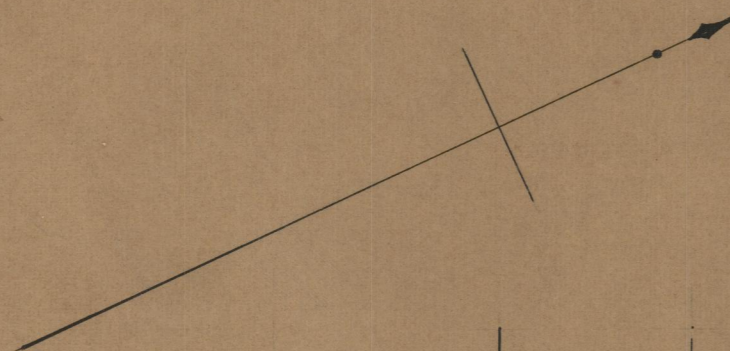
FROM ANTHONY AVE. TO HUNTINGTON AVE.

SCALE 40 FEET PER INCH.

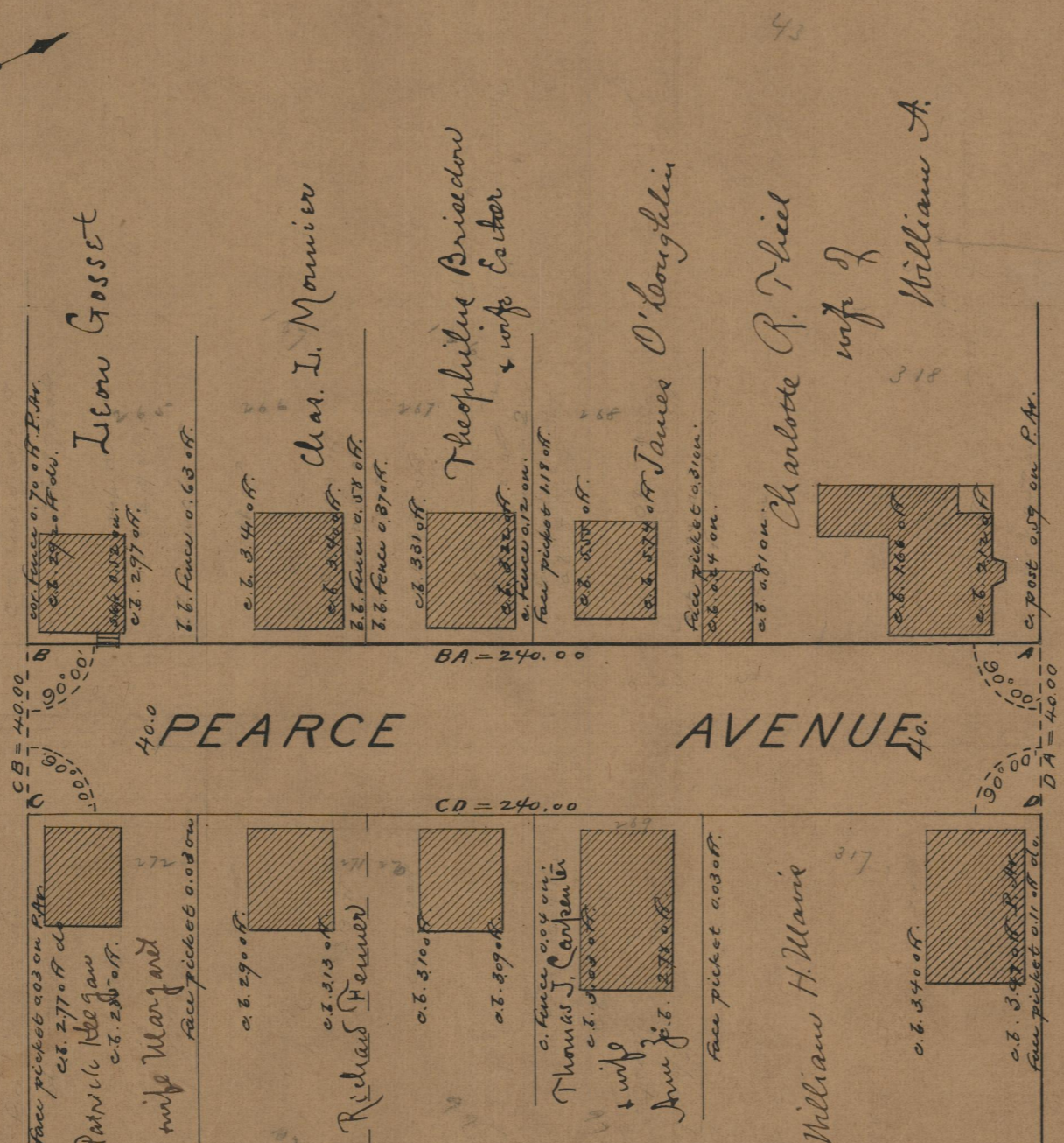
240.00

Changed to Ninigret Ave, Dec. 7, 1899.

1685-19-74
HES-XIX-74
PROVIDENCE, R. I.
CITY ENGINEER'S OFFICE
STREET LINE DEPT.
Dec. 31. 1890
017298



HUNTINGTON AVE.



ANTHONY AVE.

85
B-8

OFFICE No. 10732
DRAWER 85
SHEET B-8