

Providence, R.I.
 This plat accompanies
 our report of this date.

PLAT OF

ANTHONY AVENUE

FROM CRANSTON ST. TO BENEDICT POND

SCALE 50 FEET PER INCH. 10730

PROVIDENCE, R. I.
 CITY ENGINEER'S OFFICE
 STREET LINE DEPT.

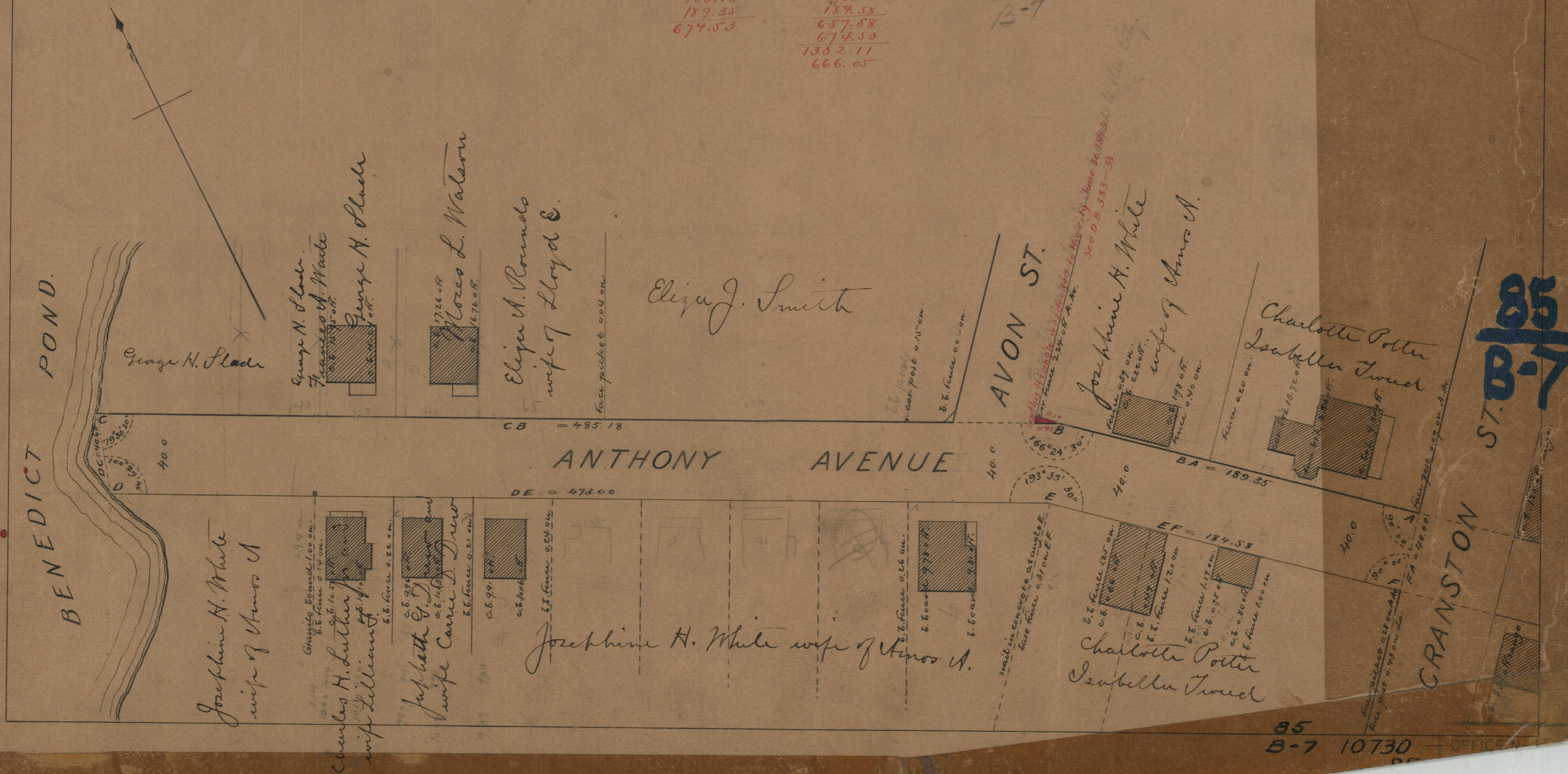
Dec 27 1890

017287

485.18
 189.35
 674.53

473.00
 184.58
 657.58
 674.53
 1332.11
 666.05

85
 B-7



85
 B-7

85
 B-7 10730