

Providence, R.I.  
This plat accompanies  
our report of this date.

# PLAT OF OPPER STREET

FROM BRANCH AVE. TO NAHANT ST.

SCALE 50 FEET PER INCH.

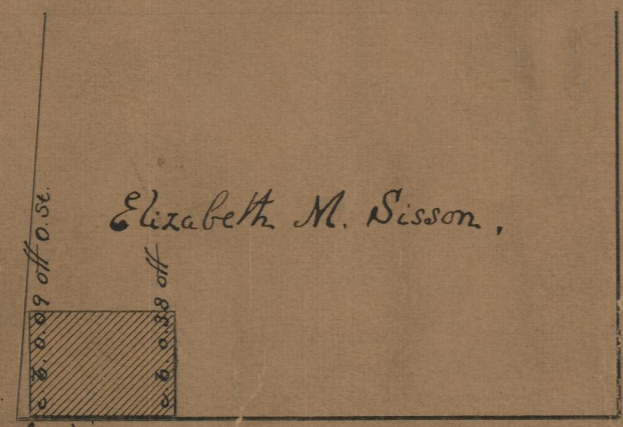
PROVIDENCE, R. I.  
CITY ENGINEER'S OFFICE  
STREET LINE DEPT.  
Dec 17, 1890  
017250

527.69  
35.67  
561.36

578.89  
53.62  
572.51  
561.36  
1133.87  
566.93

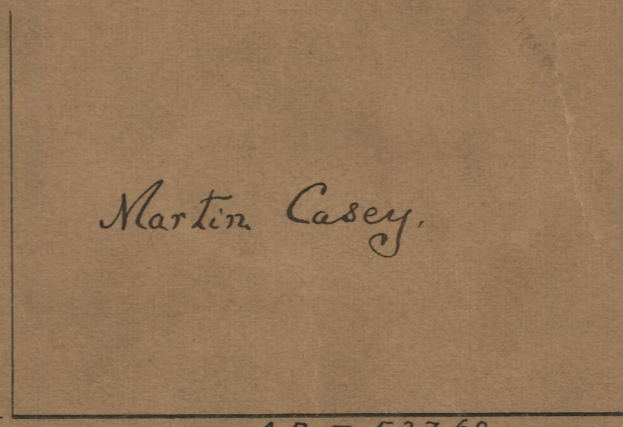


BRANCH AVE.



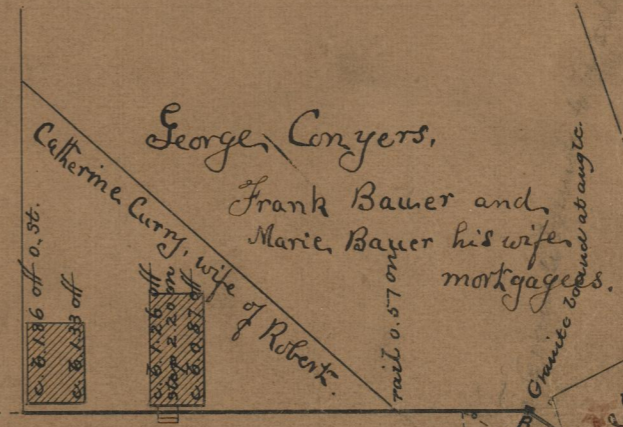
Elizabeth M. Sisson,

ST.



Martin Casey,

ST.



George Conyers,  
Frank Bauer and  
Marie Bauer his wife  
mortgagees.

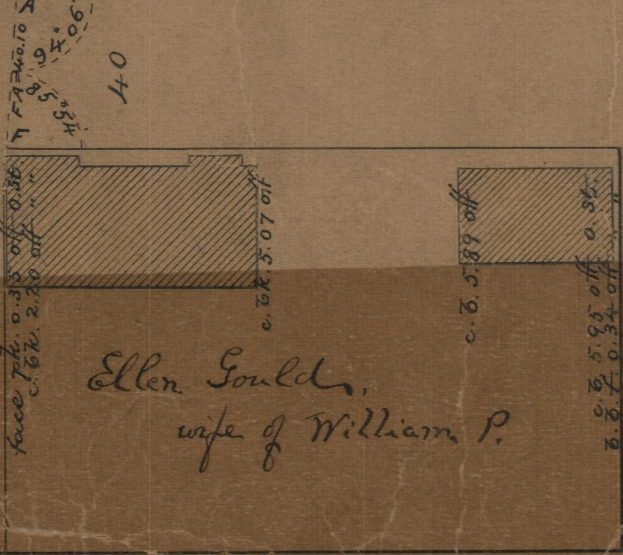
Catherine Curry, wife  
of Robert.

trail 0.57 on

AB = 527.69

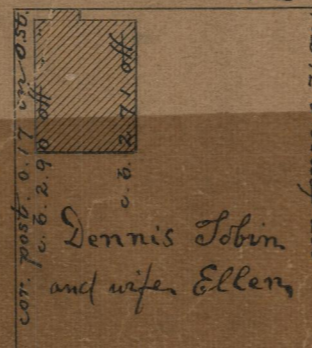
OPPER STREET

FE = 518.89



Ellen Gould,  
wife of William P.

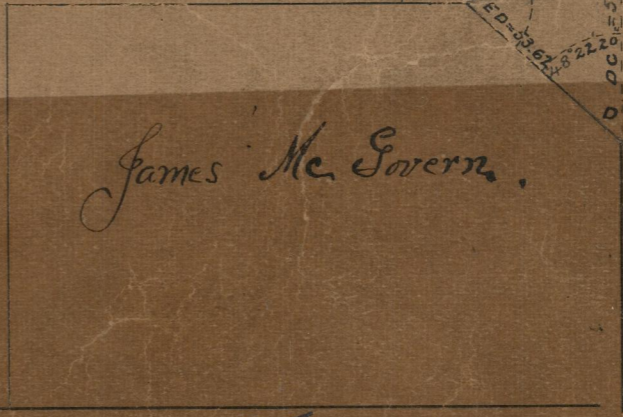
MONTICELLO



Dennis Tobin  
and wife Ellen

cor. fence 0.71 on

GREELEY



James Mc Govern.

ST.



George Mead

85  
B-4

85  
B-4

85  
B-4