

F.B. 110

PROVIDENCE, R. I.  
CITY ENGINEER'S OFFICE  
STREET LINE DEPT.

Dec. 17, 1890

017248

Providence R.I.  
This plat accompanies  
our report of this date.

# PLAT OF MANNING STREET

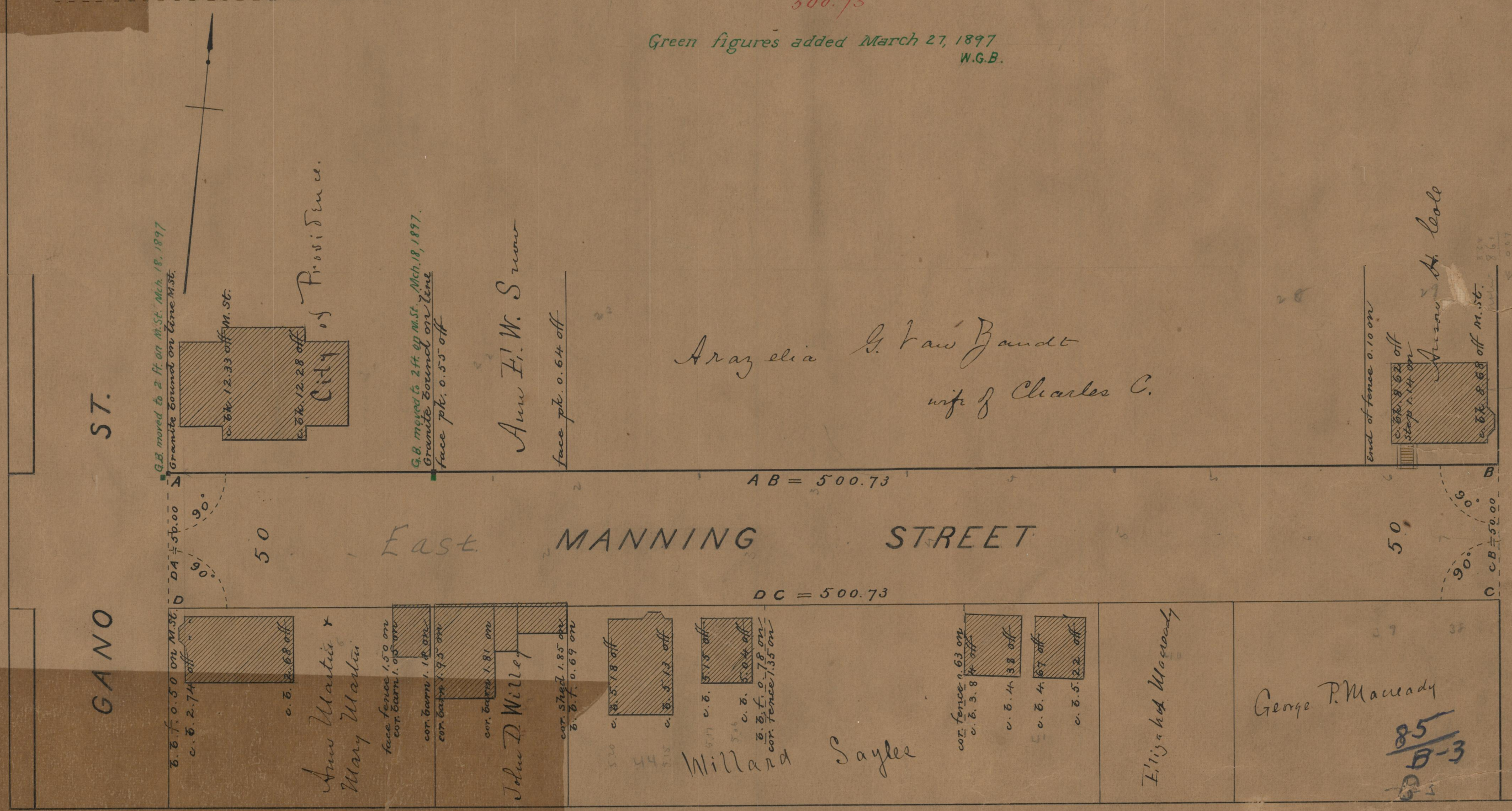
FROM GANO ST. TO WAYLAND ST.

SCALE 40 FEET PER INCH.

500.73

Changed to East Manning St. Jan. 20, 1891

Green figures added March 27, 1897  
W.G.B.



ST.

GANO

50

East MANNING STREET

AB = 500.73

DC = 500.73

50

50

Wayland

WAYLAND

OFFICE

85  
B-3  
85