

Providence, R.I.
This plat accompanies
our report of this date.

PLAT OF
HAMILTON STREET

FROM ADELAIDE AVE. TO SACKETT ST.

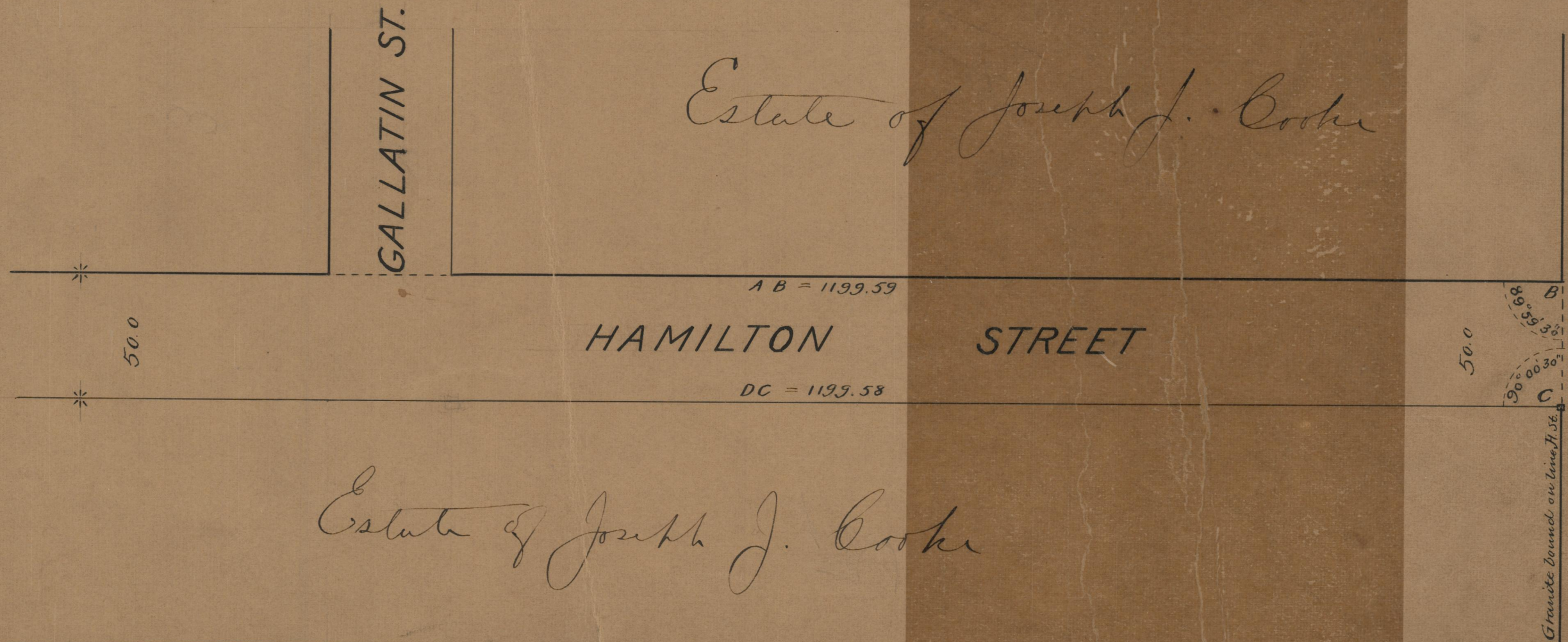
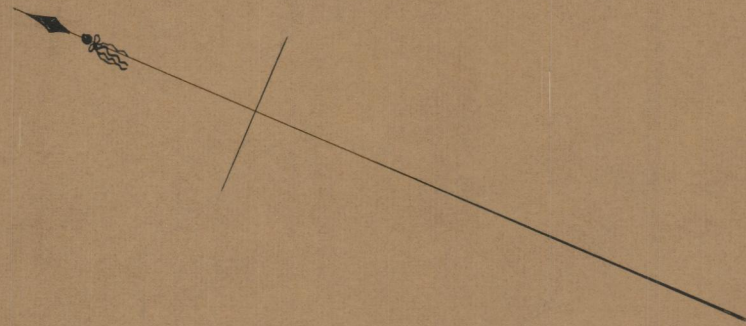
IN TWO SHEETS

SCALE 50 FEET PER INCH.

PROVIDENCE, R. I.
CITY ENGINEER'S OFFICE
STREET LINE DEPT.

Oct. 29, 1890

017148



85
A-98

OFFICE NO.	10665
DRAWER	85
SHEET	A-98