

EGG-38-98

PROVIDENCE, R. I.
CITY ENGINEER'S OFFICE
STREET LINE DEPT.

Oct. 21. 1890.

017107

Providence R.I.
This plat accompanies
our report of this date.

PLAT OF LEVINA STREET

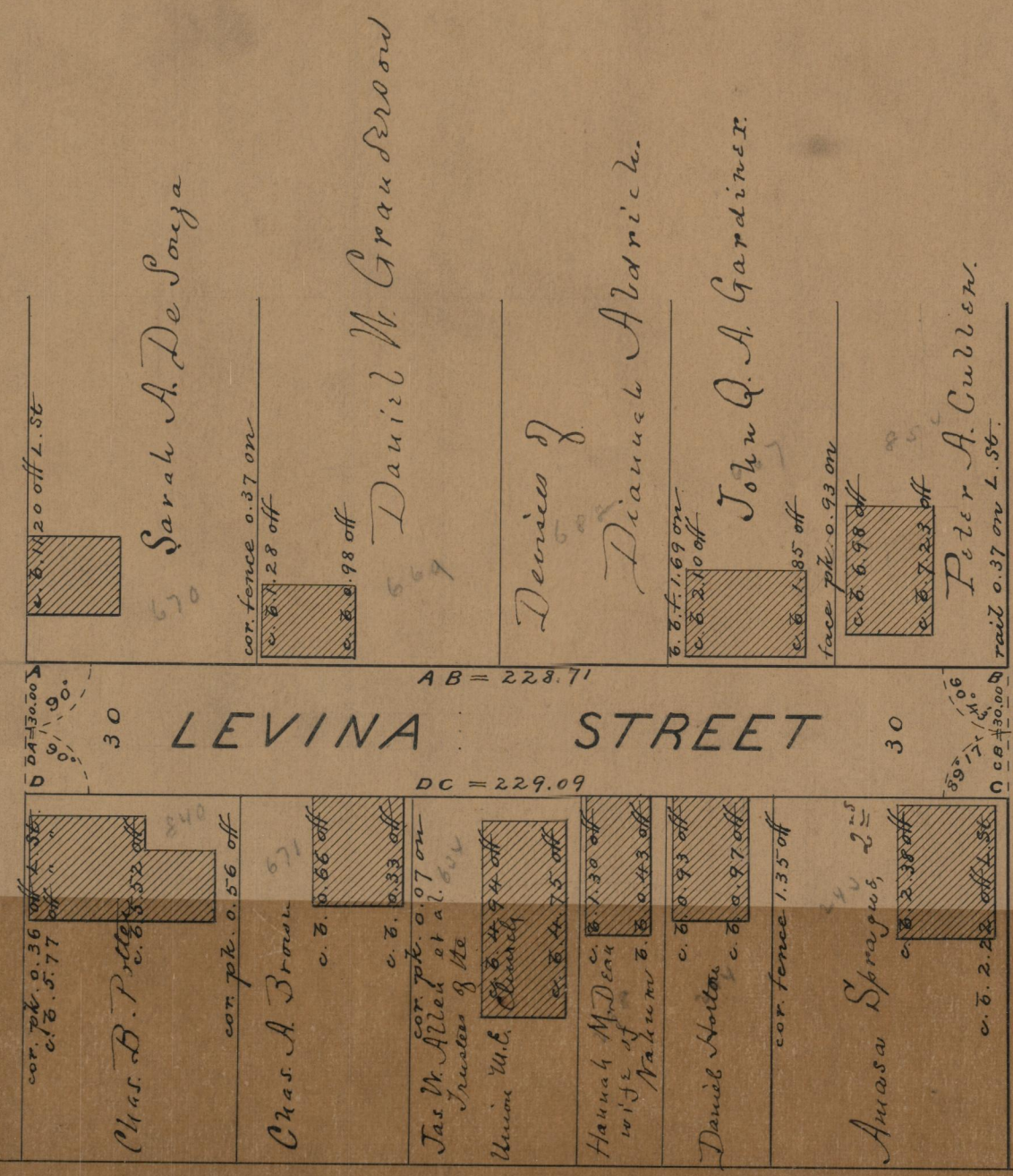
FROM COLWELL ST. TO COLE ST.

SCALE 40 FEET PER INCH.



Logan Ave.
COLWELL ST.

Gadsden St.
COLE ST.



OFFICE No.	10660
DRAWER	85
SHEET	A-93

85
A-93