

L.P. Sawyer Eng.

No Notes Refer to H.C.S.

PROVIDENCE, R. I.
CITY ENGINEER'S OFFICE
STREET LINE DEPT.

Oct. 4, 1890

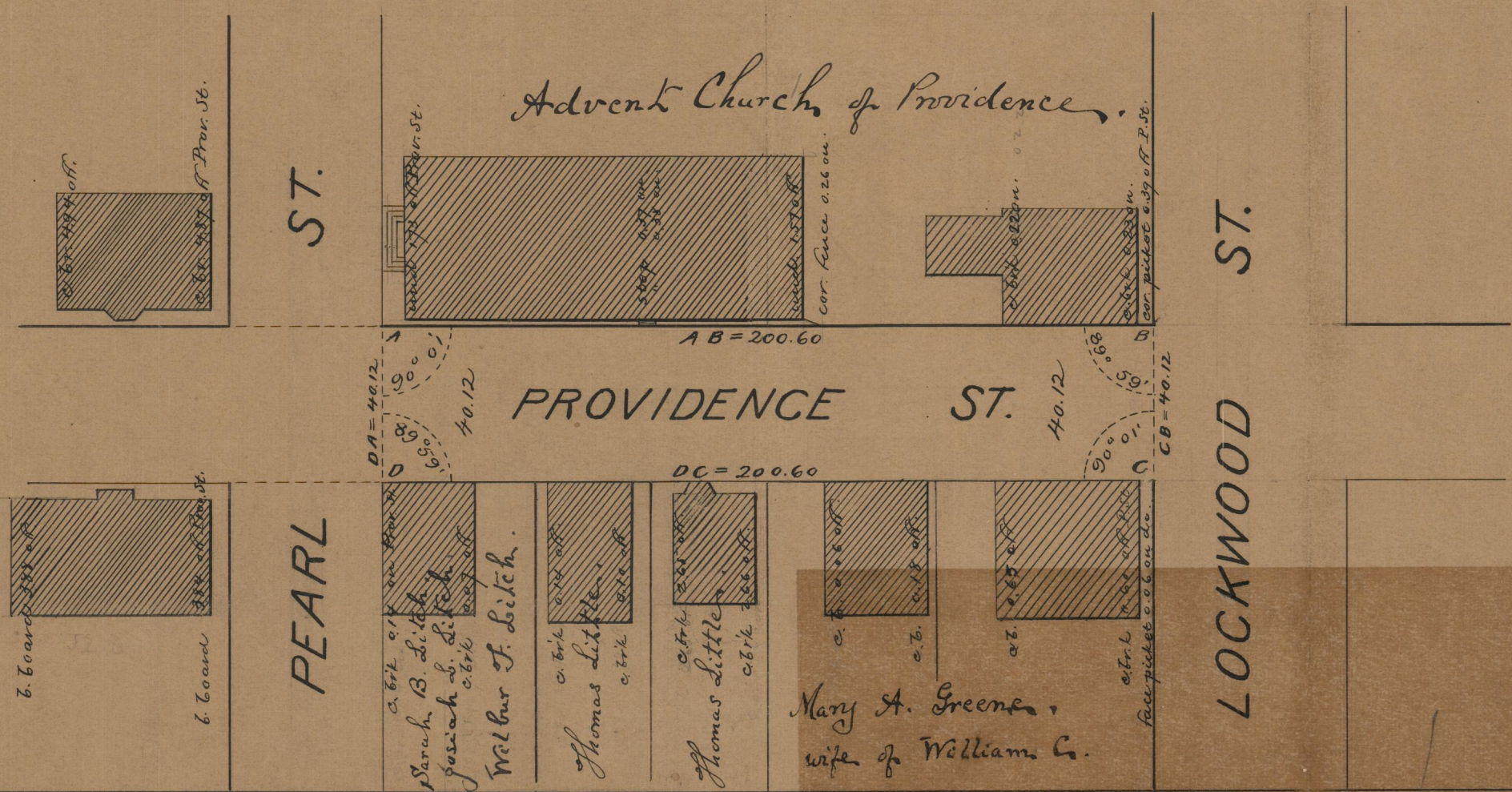
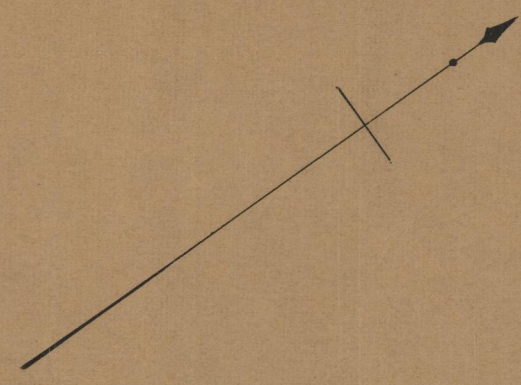
017025

Providence, R.I.
This plat accompanies
our report of this date.

PLAT OF PROVIDENCE STREET

FROM PEARL ST. TO LOCKWOOD ST.

SCALE 40 FEET PER INCH.



85
A-90

85
A90

OFFICE No.	10540
DRAWER	85
SHEET	A-90