

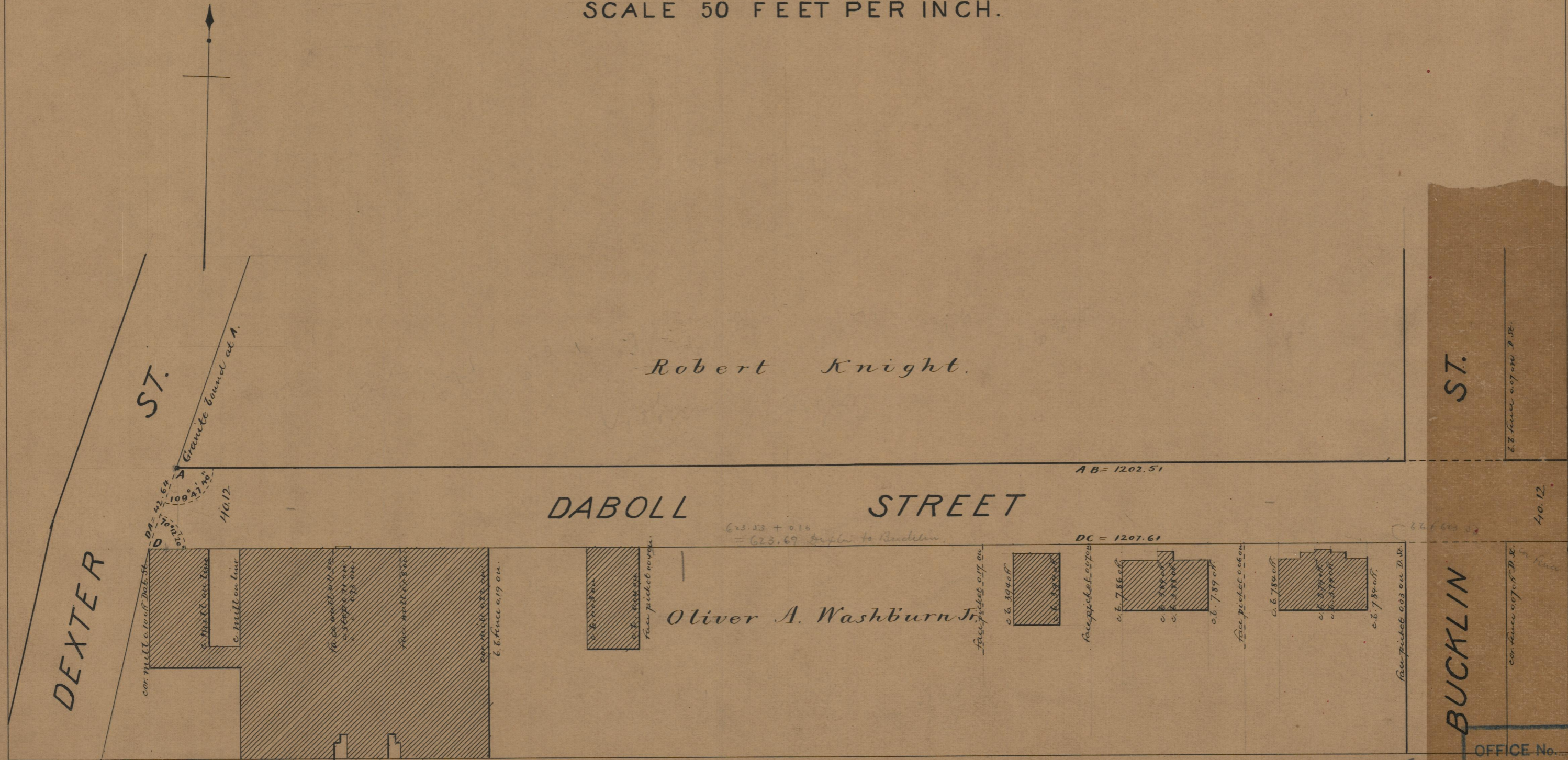
Providence, R.I.
This plat accompanies
our report of this date.

PROVIDENCE, R. I.
CITY ENGINEER'S OFFICE
STREET LINE DEPT.

Aug. 13, 1890
016764

PLAT OF
DABOLL STREET
FROM DEXTER ST. TO GREENWICH ST.
IN TWO SHEETS

SCALE 50 FEET PER INCH.



85
A-79

85
A-79

85
A-79

OFFICE No.	10526
DRAWER "	85
SHEET "	A-79