

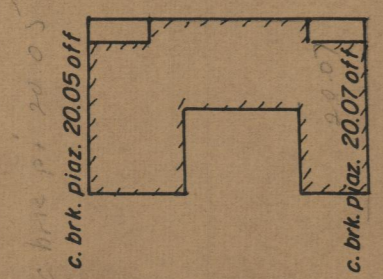
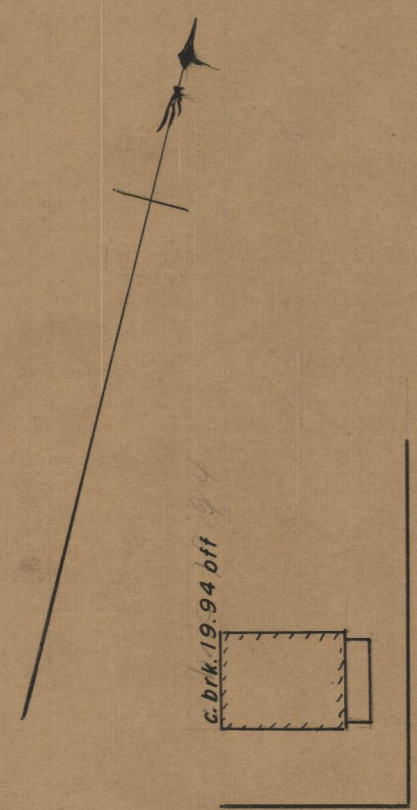
C.C. Mumford

123-XV-77

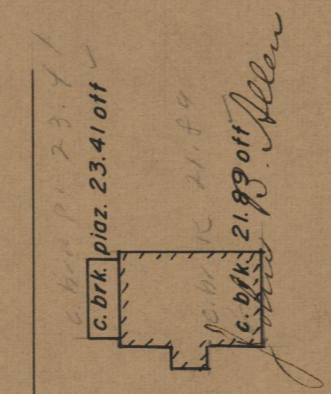
Providence, R.I.
This plat accompanies
our report of this date.

PROVIDENCE, R. I.
CITY ENGINEER'S OFFICE
STREET LINE DEPT.
July 26, 1890
016697

PLAT OF
LLOYD AVENUE
FROM SLATER AVE. TO BUTLER AVE.
SCALE 50 FEET PER INCH.



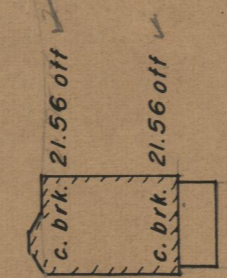
SLATER AVE.



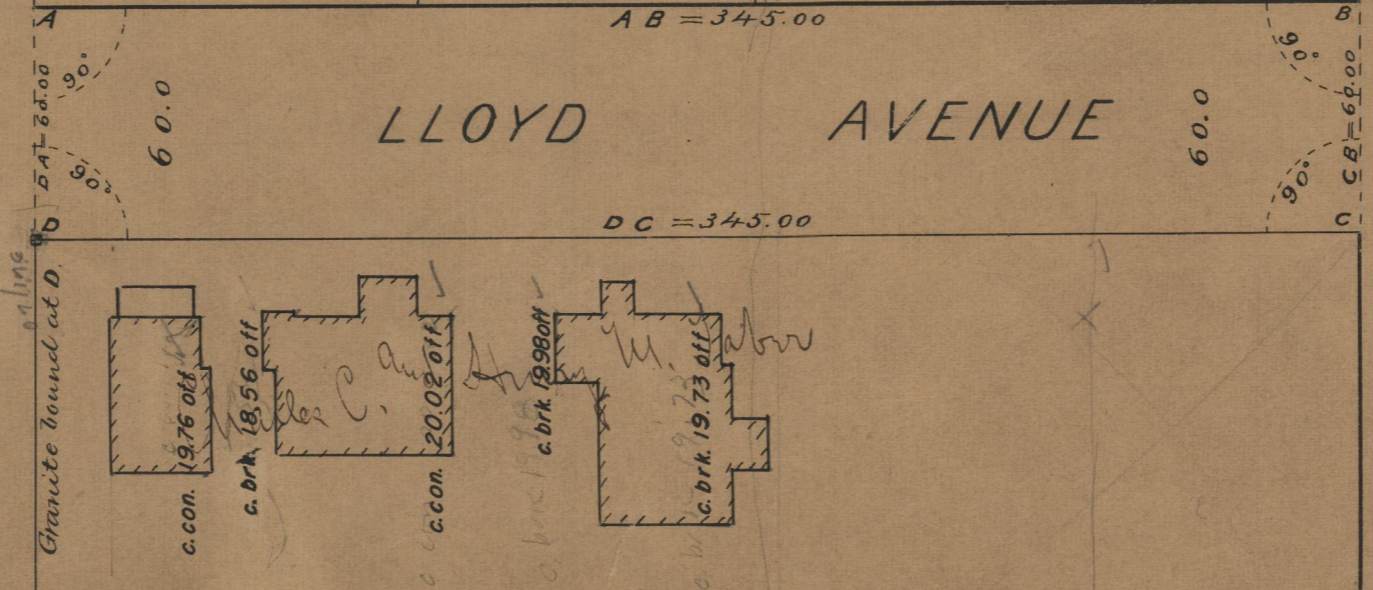
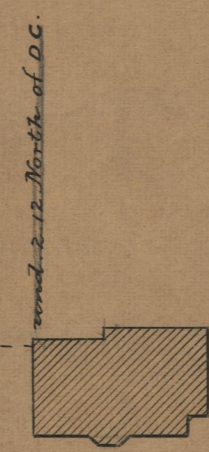
345
150
195

Chas. W. Rogers

My boss & Land Co.



Blackstone
BUTLER AVE.



85
125
OFFICE No. 10515
DRAWER 8
SHEET 4