

F B 16-85
E B B - XVI - 85

PROVIDENCE, R. I.
CITY ENGINEER'S OFFICE
STREET LINE DEPT.

June 26, 1890.

016432

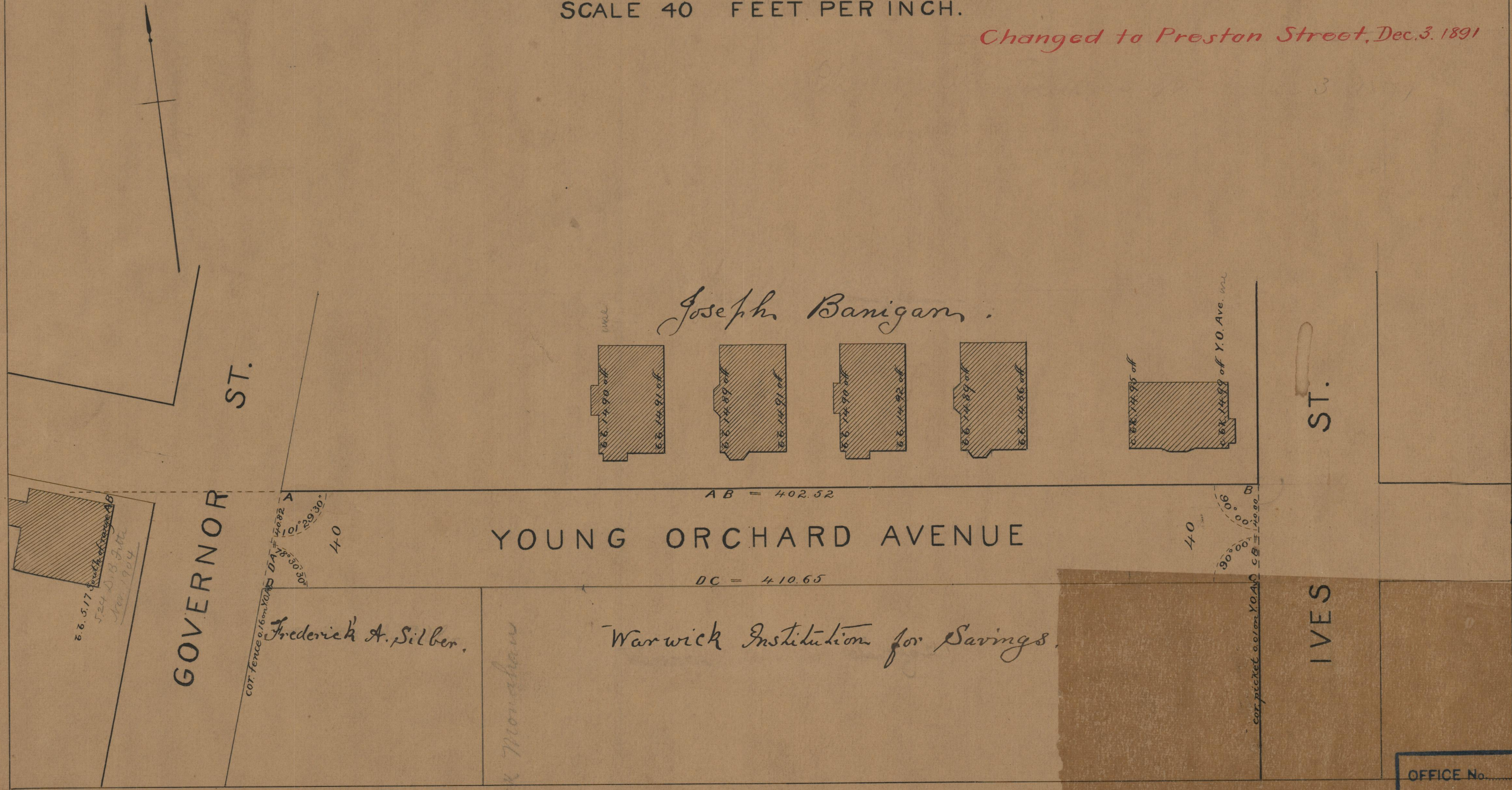
Providence, R. I.
This plat accompanies
our report of this date.

PLAT OF YOUNG ORCHARD AVENUE

FROM GOVERNOR ST. TO IVES ST.

SCALE 40 FEET PER INCH.

Changed to Preston Street, Dec. 3, 1891



85
A-74

85
A-74
85
A-74

OFFICE No.	10514
DRAWER	85
SHEET	A-74