

Providence, R.I.  
This plat accompanies  
our report of this date.

PROVIDENCE, R. I.  
CITY ENGINEER'S OFFICE  
STREET LINE DEPT.

June 14, 1890

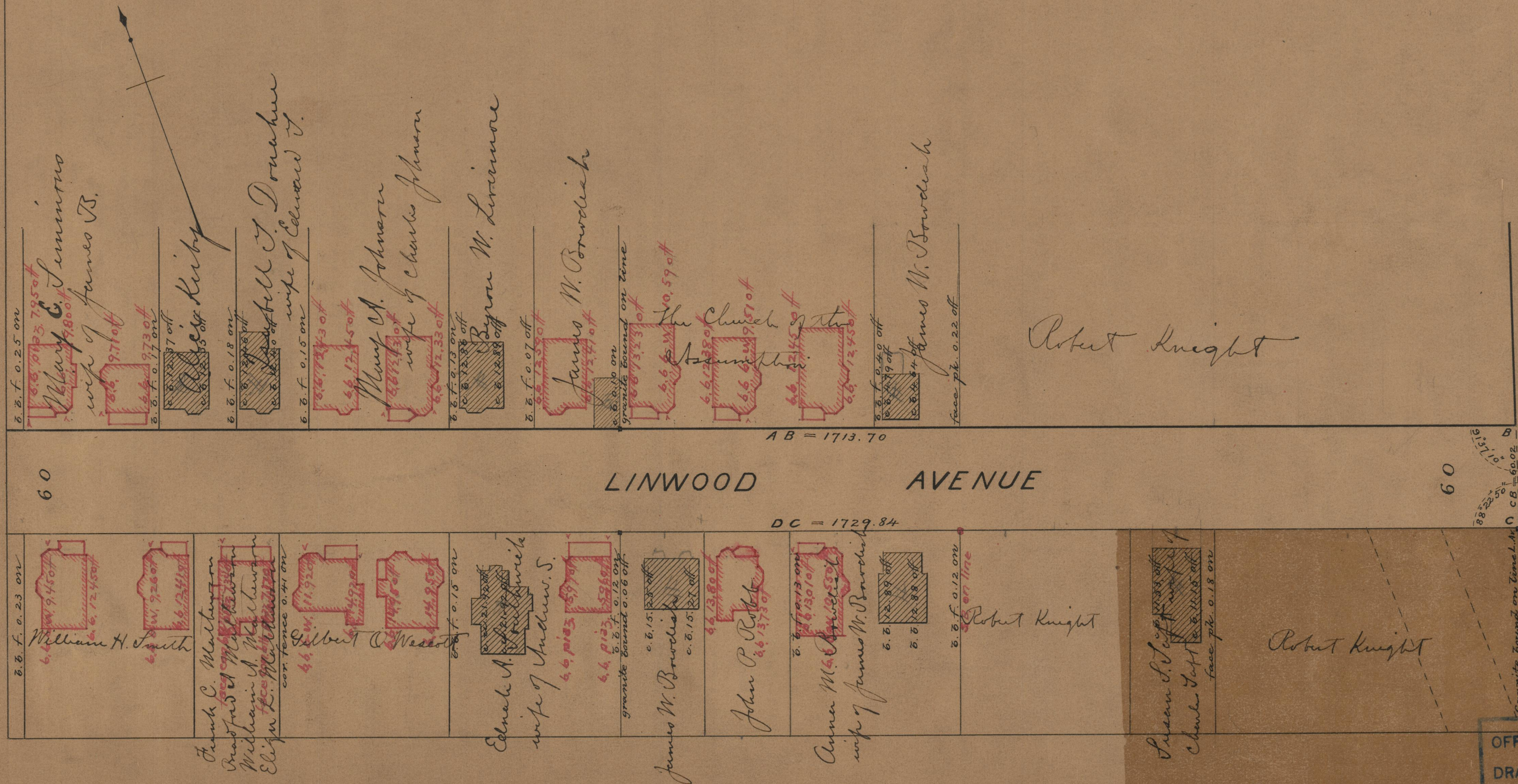
016391

# PLAT OF LINWOOD AVENUE

FROM CRANSTON ST. TO DEXTER ST.

IN TWO SHEETS

SCALE 60 FEET PER INCH.



DEXTER ST.

OFFICE No.	10485
DRAWER	85
SHEET	A-72

85  
A-72

85  
A-72