

Providence, R.I.
This plat accompanies
our report of this date.

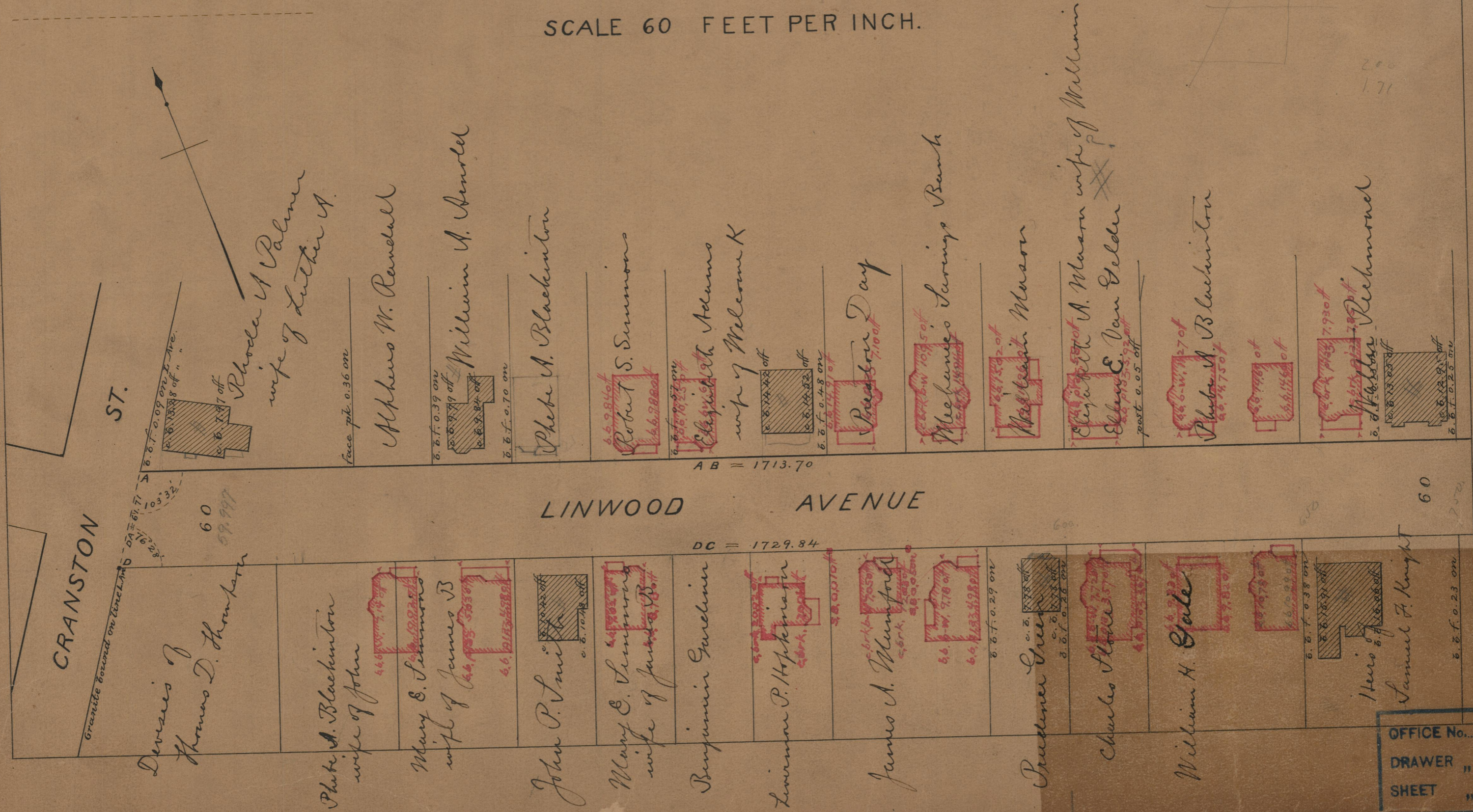
PROVIDENCE, R. I.
CITY ENGINEER'S OFFICE
STREET LINE DEPT
June 14, 1890.
016390

PLAT OF LINWOOD AVENUE

FROM CRANSTON ST. TO DEXTER ST.

IN TWO SHEETS

SCALE 60 FEET PER INCH.



AB = 1713.70

DC = 1729.84

200
171

85
A-71

OFFICE No. 10484
DRAWER 85
SHEET A-71