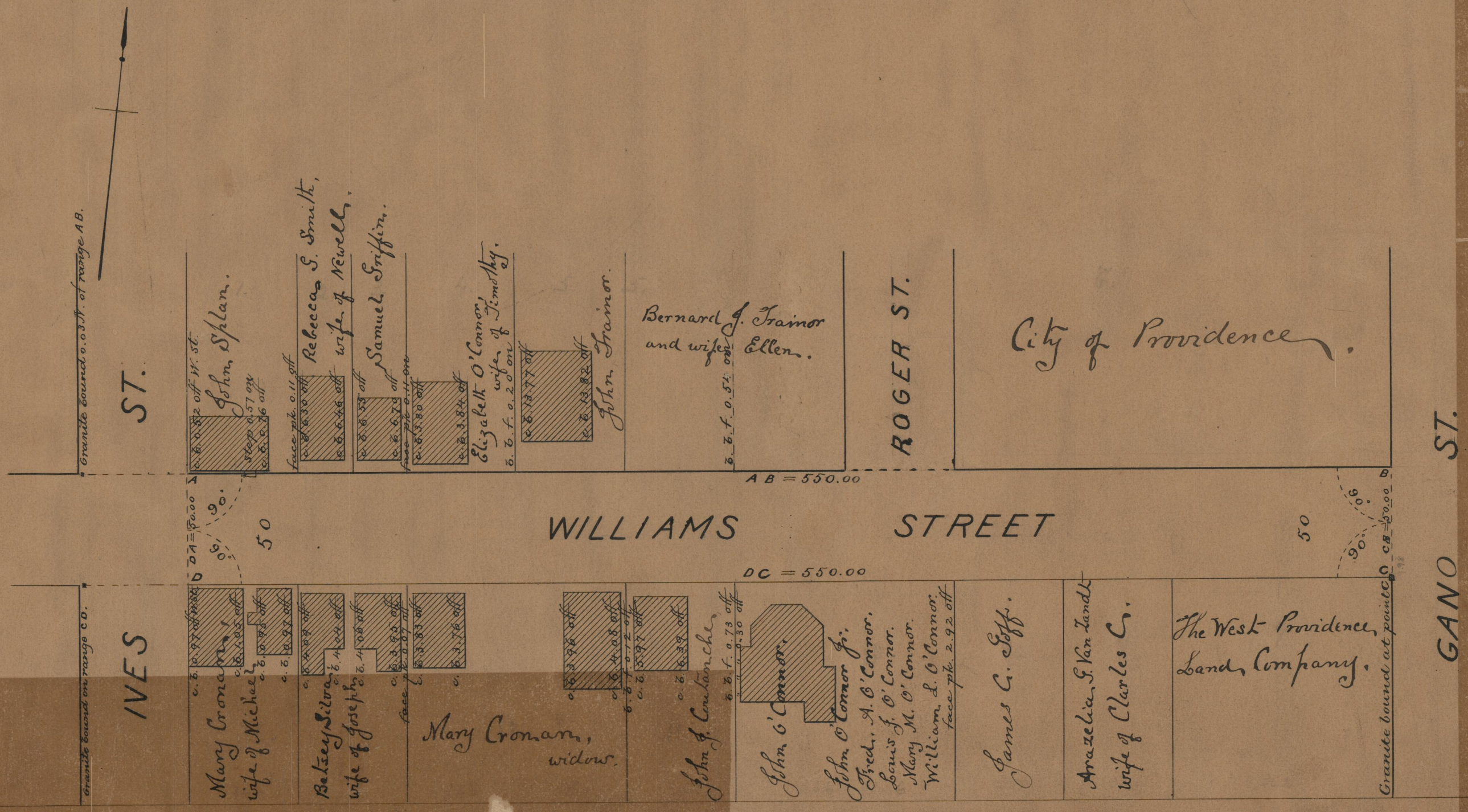


PRB-XY-66
 PROVIDENCE, R. I.
 CITY ENGINEER'S OFFICE
 STREET LINE DEPT.
 June 10, 1890
 016372

Providence, R.I.
 This plat accompanies
 our report of this date.

PLAT OF WILLIAMS STREET

FROM IVES ST. TO GANO ST.
 SCALE 50 FEET PER INCH.



85
A-70

OFFICE No. 10481
 DRAWN 85
 SHEET A-70

85
 A-70