

PROVIDENCE, R. I.
CITY ENGINEER'S OFFICE
STREET LINE DEPT.

July 17, 1889

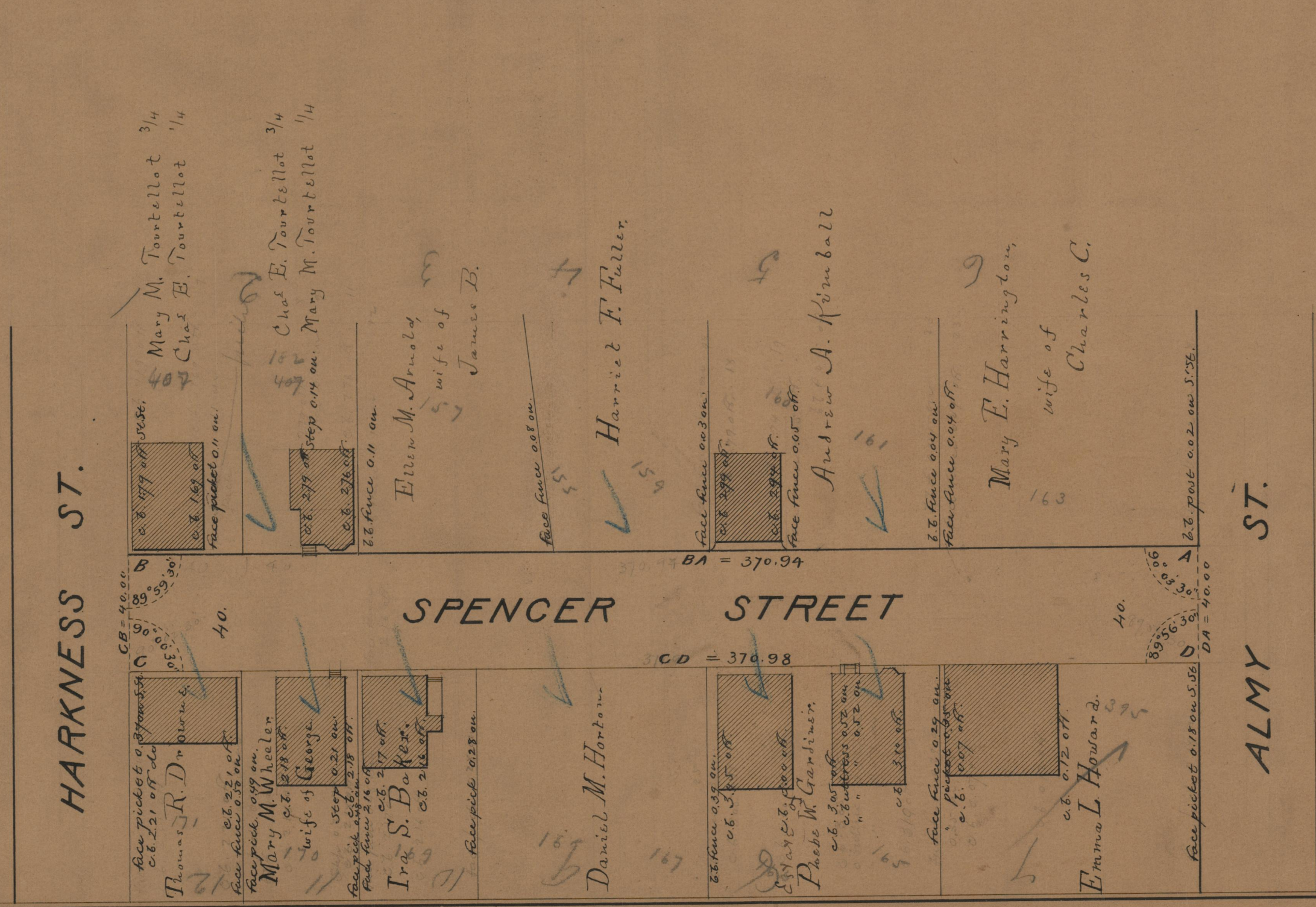
015265

Providence R.I.
This plat accompanies
our report of this date

PLAT OF SPENCER STREET

FROM ALMY ST. TO HARKNESS ST.

SCALE 40 FEET PER INCH



c.b. 2.25' South of Frange
A.B.



85
A-7

OFFICE NO.	10062
DRAWER	85
SHEET	A-7