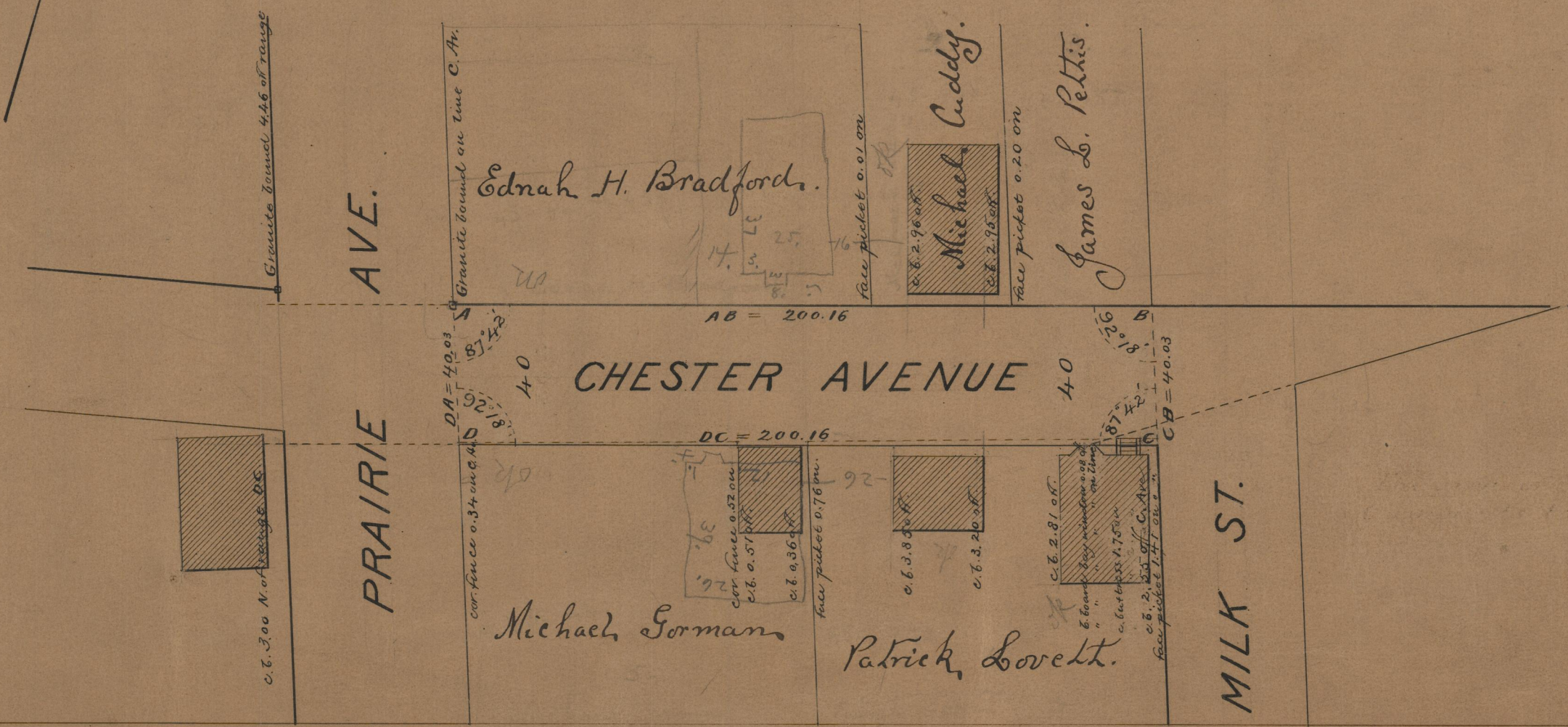


Providence, R.I.
 This plat accompanies
 our report of this date.

EA XV-65-67
 PROVIDENCE, R. I.
 CITY ENGINEER'S OFFICE
 STREET LINE DEPT.
 June 6, 1890
 016361

PLAT OF CHESTER AVENUE

FROM PRAIRIE AVE. TO MILK ST.
 SCALE 40 FEET PER INCH.



85
 A-67

OFFICE No. 10469
 DRAWER 85
 SHEET A-67