

PROVIDENCE, R. I.
CITY ENGINEER'S OFFICE
STREET LINE DEPT.
Apr. 26, 1890
016181

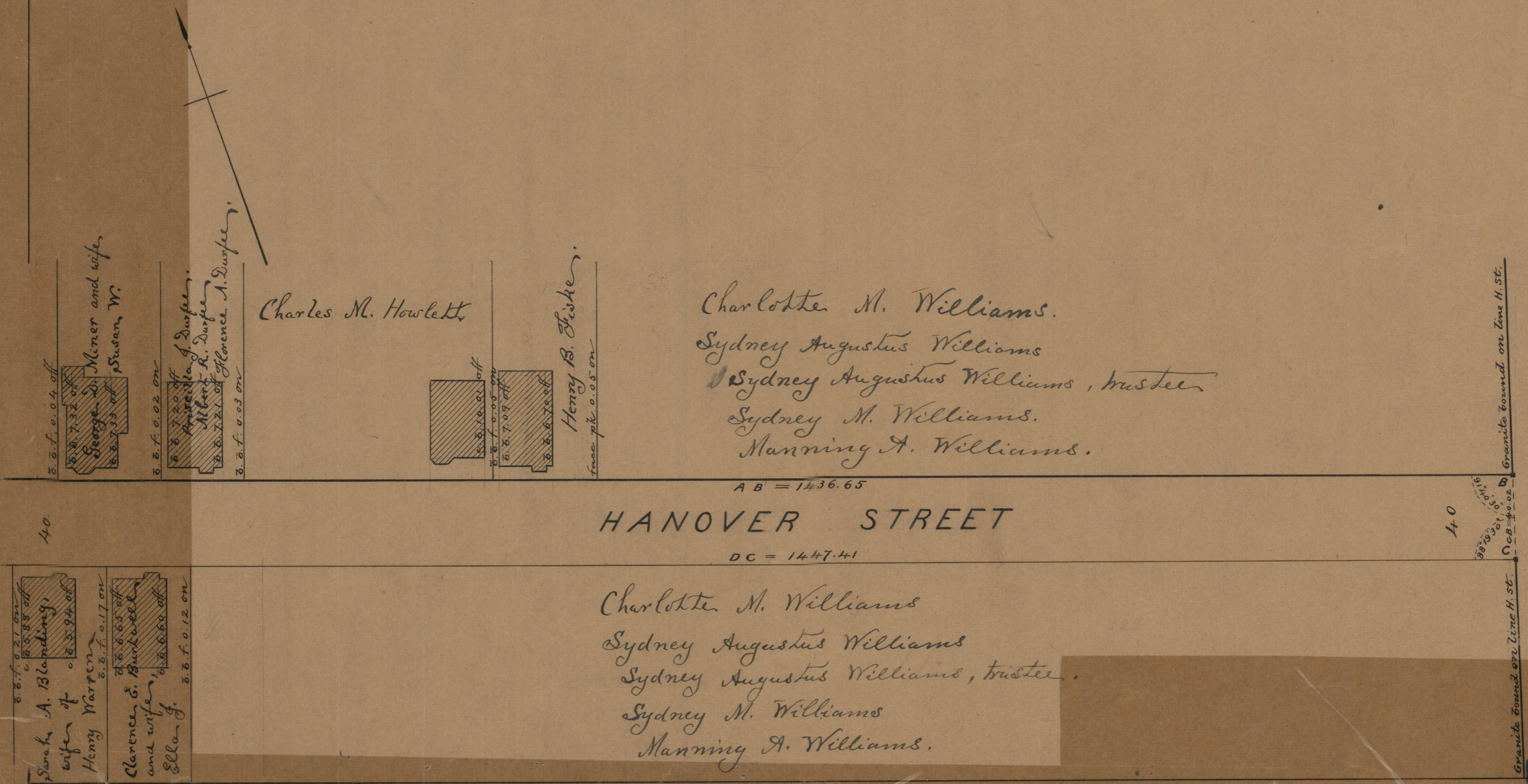
Providence R.I.
This plat accompanies
our report of this date.

PLAT OF HANOVER STREET

FROM CRANSTON ST. TO DEXTER ST.

IN TWO SHEETS.

SCALE 50 FEET PER INCH.



40

HANOVER STREET

DC = 1447.41

AB = 1436.65

40

ST.

DEXTER

Charlotte M. Williams
 Sydney Augustus Williams
 Sydney Augustus Williams, trustee
 Sydney M. Williams
 Manning A. Williams.

Sarah A. Blanding,
 wife of Henry Warren
 Clarence E. Burkwell
 and wife
 Ella J.
 George D. Miner and wife
 Susan W.
 Providence A. Durfee
 Albert R. Durfee
 Florence A. Durfee
 Charles M. Howlett
 Henry B. Fiske

Granite found on Line H. St.

Granite found on Line H. St.

OFFICE No. 10406
 DRAWER " 85
 SHEET " A-62

85
A-62