

PROVIDENCE, R. I.
CITY ENGINEER'S OFFICE
STREET LINE DEPT.

Dec. 12, 1890

017237

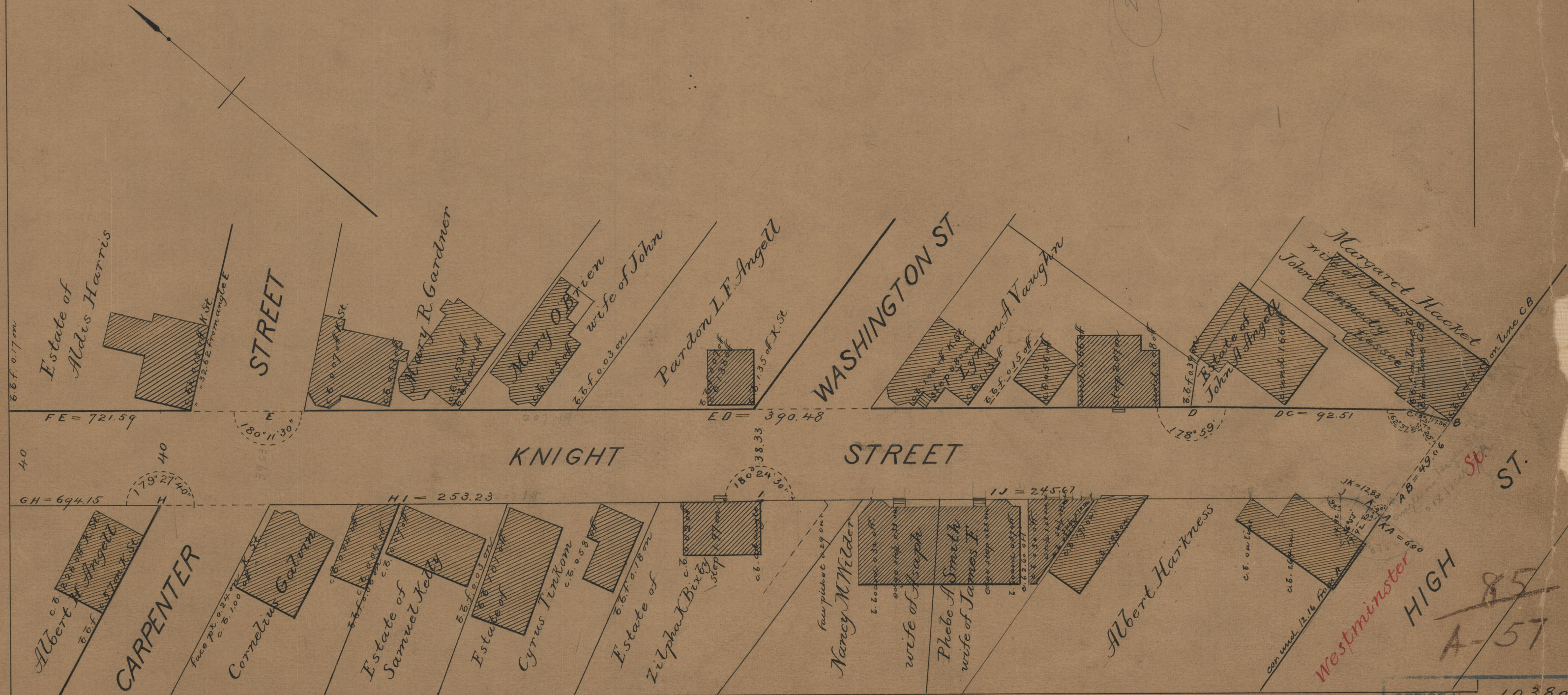
PLAT OF
KNIGHT STREET

FROM HIGH ST. TO BROADWAY

IN TWO SHEETS

SCALE 40 FEET PER INCH.

Providence, R.I.
This plat accompanies
our report of this date.



Westminster HIGH ST.

OFFICE No. 10380

85
A-57

85

88.50
27.5
2.08
92.08
87.57
106.22
101
1104.89
1694.51
11.97
12.16
6.49