

F.R.R.-XV-44

PROVIDENCE, R. I.
CITY ENGINEER'S OFFICE
STREET LINE DEPT.

Mar. 14, 1890

016024

PLAT OF

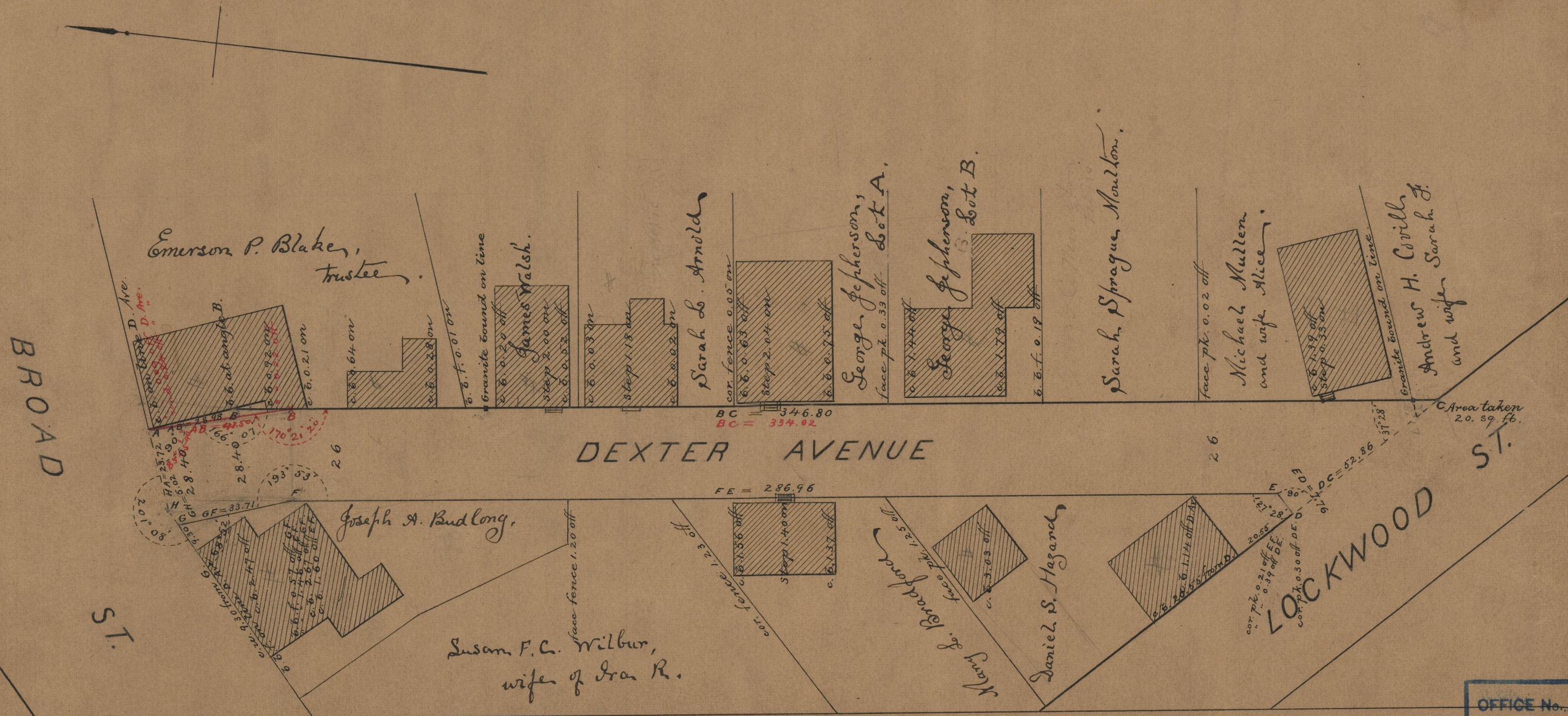
DEXTER AVENUE

FROM BROAD ST. TO LOCKWOOD ST.

SCALE 30 FEET PER INCH.

Providence R.I.
This plat accompanies
our report of this date.

Changed to Wickham St. Dec. 7, 1899.



OFFICE No.	10370
DRAWER	85
SHEET	A-56

85
A-56