

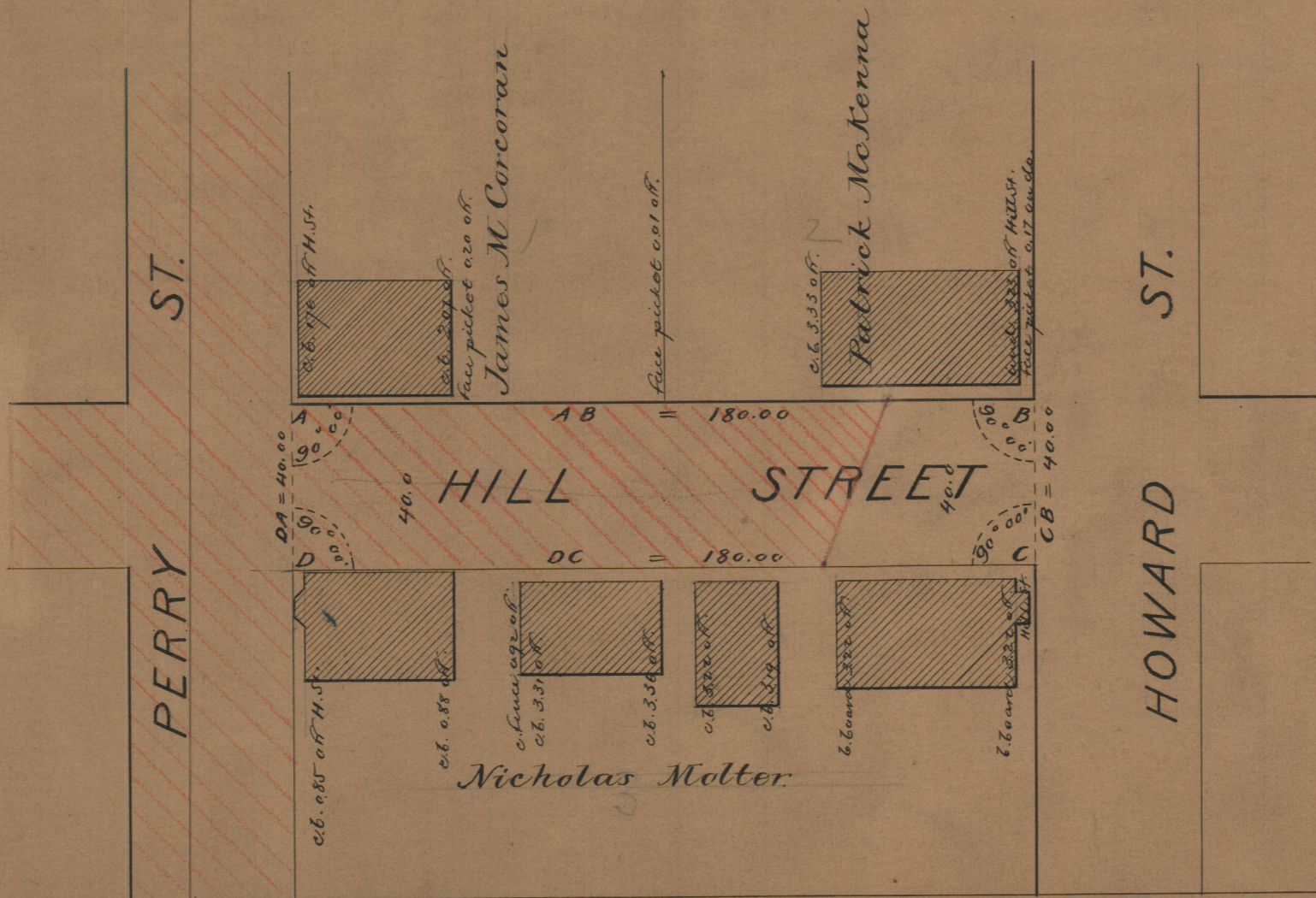
PROVIDENCE, R. I.
CITY ENGINEER'S OFFICE
STREET LINE DEP'T.

Jan 3. 1890

015818

Providence, R.I.
This plat accompanies
our report of this date.

PLAT OF
HILL STREET
FROM HOWARD ST. TO PERRY ST.
SCALE 40 FEET PER INCH.



85
A38

OFFICE No. 10330

Mar. 20, 1890

85
A-38

85
A-38