

Providence, R.I.
This plat accompanies
our report of this date.

PLAT OF
BAKER STREET

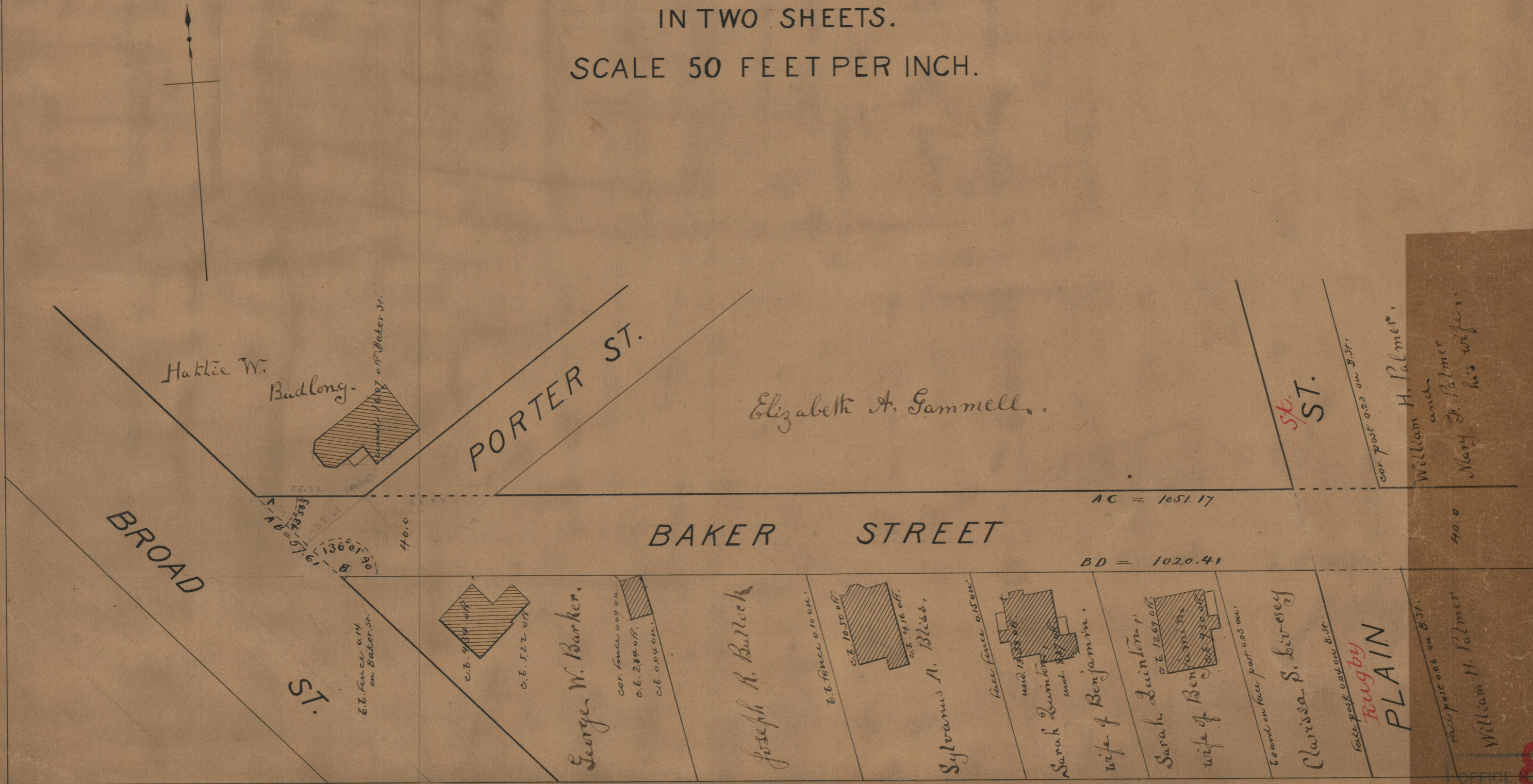
FROM BROAD ST. TO EDDY ST.

IN TWO SHEETS.

SCALE 50 FEET PER INCH.

Dec. 31. 1889

015807



William H. Palmer and his wife
Mary J. Palmer

40.0

William H. Palmer

OFFICE 1032
DRAWN 85
SHEET A-36

85
A-36

85
A-36