

Received April 17, 1890

PROVIDENCE, R. I.
CITY ENGINEER'S OFFICE
STREET LINE DEPT.

Providence, R.I.
This plat accompanies
our report of this date.

PLAT OF KNIGHT STREET

FROM BROADWAY TO ATWELLS AVE.

IN FOUR SHEETS

SCALE 40 FEET PER INCH.

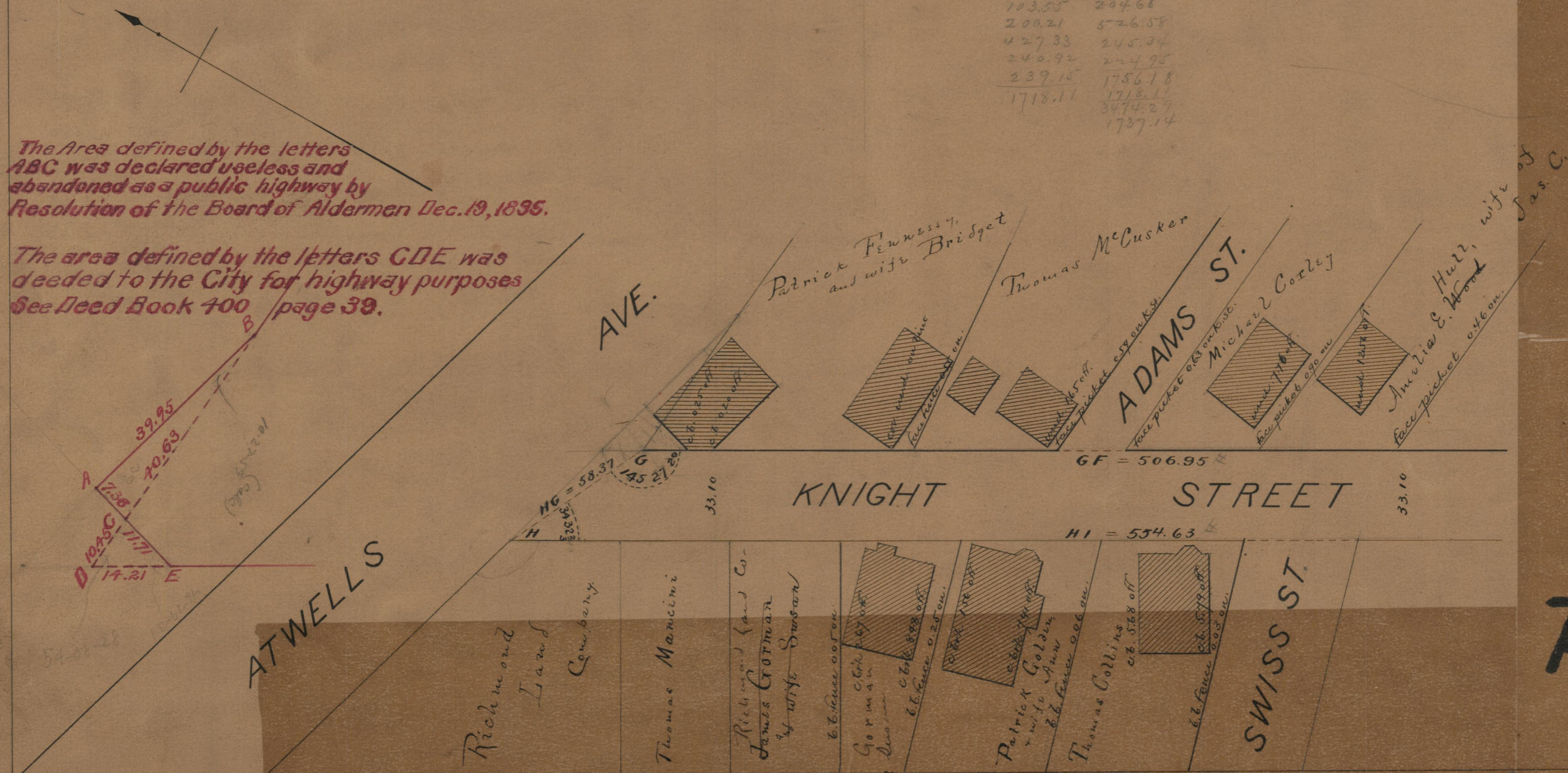
Dec. 18, 1889.

015768

506.95	554.63
103.55	294.68
200.21	526.58
427.33	245.34
240.92	224.95
239.15	1756.18
1718.11	1718.11
	3474.29
	1737.14

The Area defined by the letters
ABC was declared useless and
abandoned as a public highway by
Resolution of the Board of Aldermen Dec. 19, 1895.

The area defined by the letters GDE
was deeded to the City for highway purposes
See Deed Book 400 page 39.



85
A-33

85
A-33

OFFICE
DRAWN

103