

Providence R.I.
 This plat accompanies
 our report of this date

FBB-XV-42
 PROVIDENCE, R. I.
 CITY ENGINEER'S OFFICE
 STREET LINE DEPT.

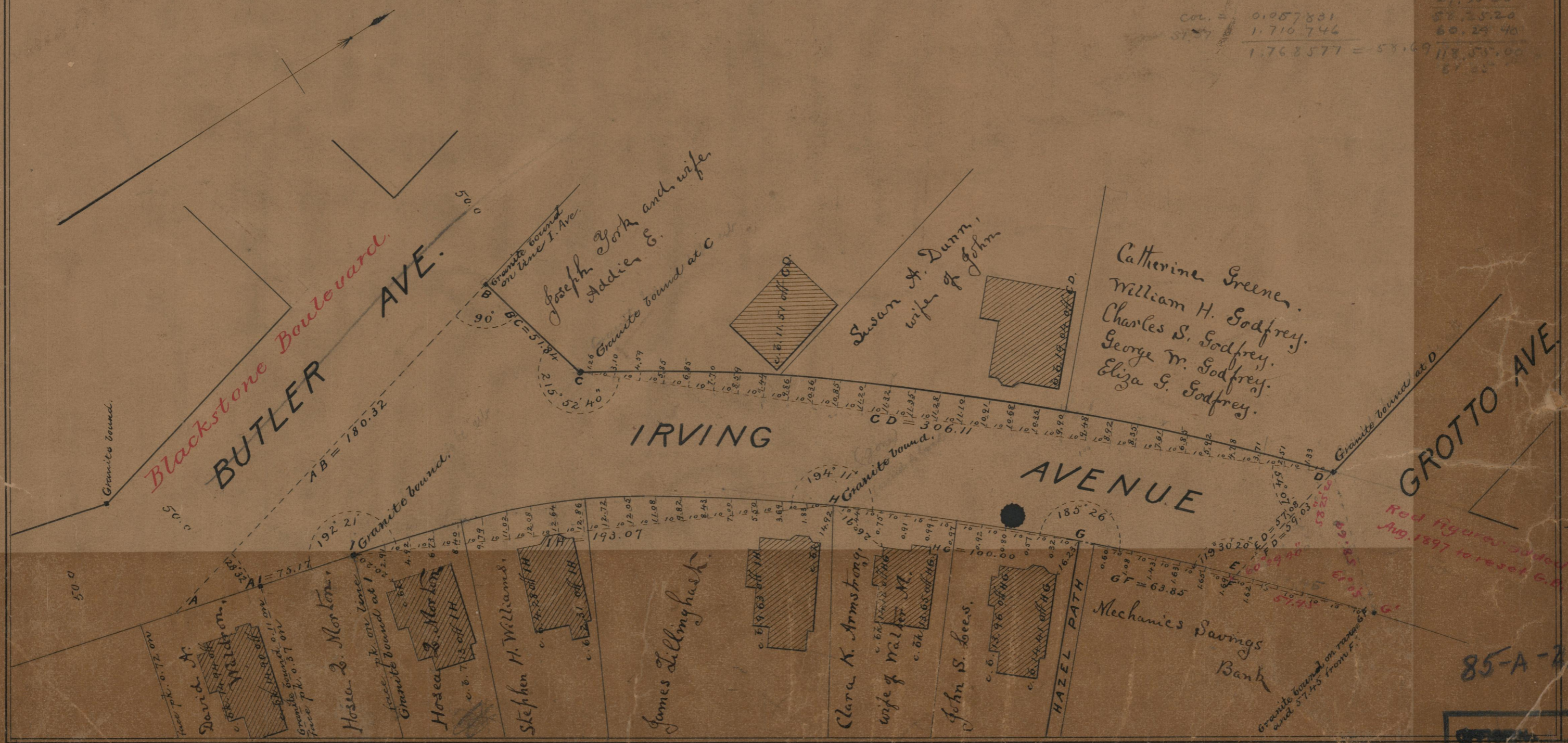
PLAT OF IRVING AVENUE FROM BUTLER AVE. TO GROTTA AVE.

Nov 6, 1889
 015635

SCALE 40 FEET PER INCH

29°30'20"	9.692418	9.959672
59.03	1.771073	1.771073
	1.863986	1.710746
57.45		9.07
29.07		
27.33	24.38	1.453012
	51.37	1.710746
		9.792266 = tan 25°55'
		27.33 30
		87.25 20
		60.25 40
		117.50 00
		57.25

cor. = 0.087831
 ST. = 1.710746
 1.768577 = 57.69



Red figures added
 Aug. 1897 to reset G.P. at G

85
 A-29

85-A-29

85-A-29

10264
DRAWER 85
A 29