

C. C. Mumford

HES-XVIII-138

PROVIDENCE, R. I.  
CITY ENGINEER'S OFFICE  
STREET LINE DEPT.

Oct. 10, 1889

015546

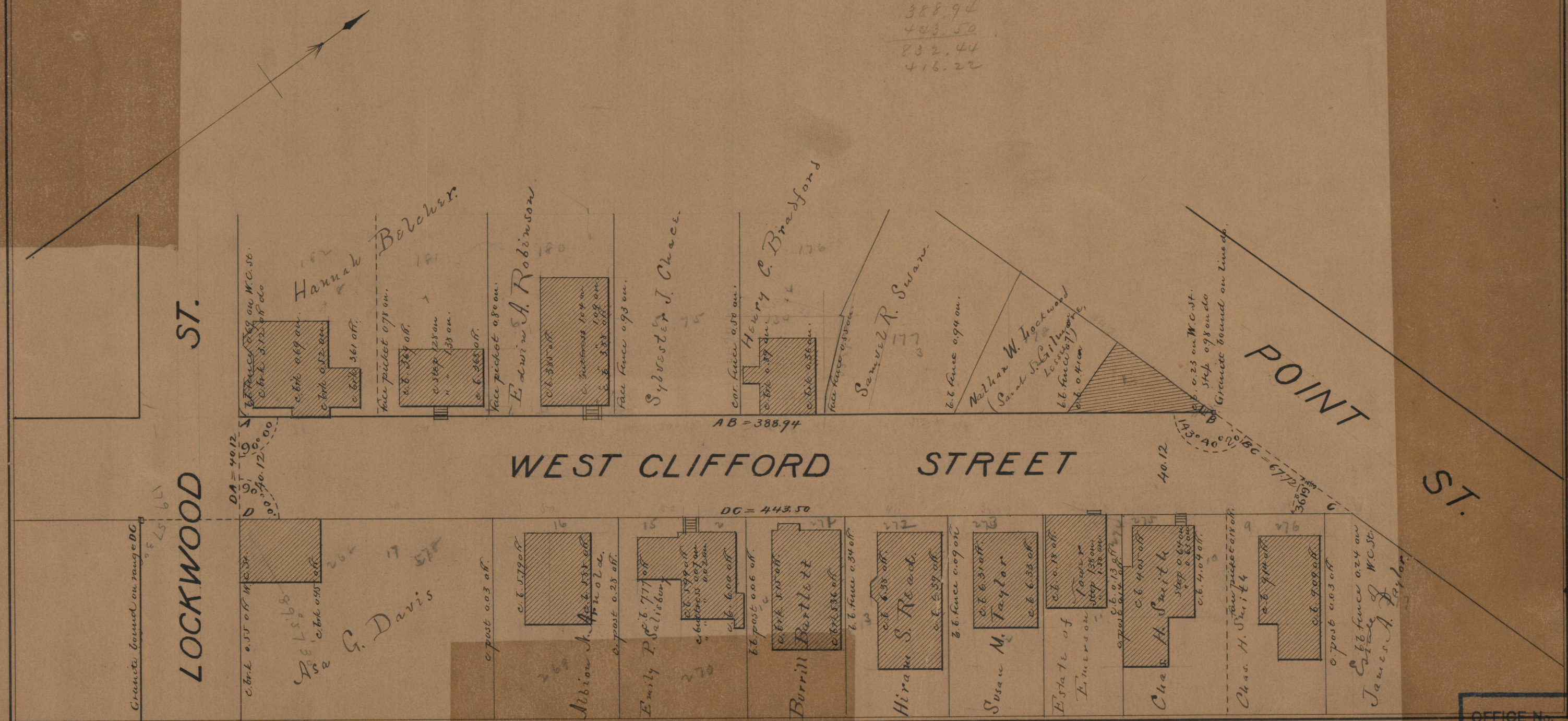
Providence R.I.  
This plat accompanies  
our report of this date

# PLAT OF WEST CLIFFORD STREET

FROM LOCKWOOD ST. TO POINT ST.

SCALE 40 FEET PER INCH

388.94  
443.50  
832.44  
416.22



85  
A-24  
85  
A-24

OFFICE No.	1026-1
DRAWER	85
SHEE.	A-24

85  
A-24