

W.F.S. XVIII 122

PROVIDENCE, R. I.
CITY ENGINEER'S OFFICE
STREET LINE DEPT.

Oct. 5. 1889

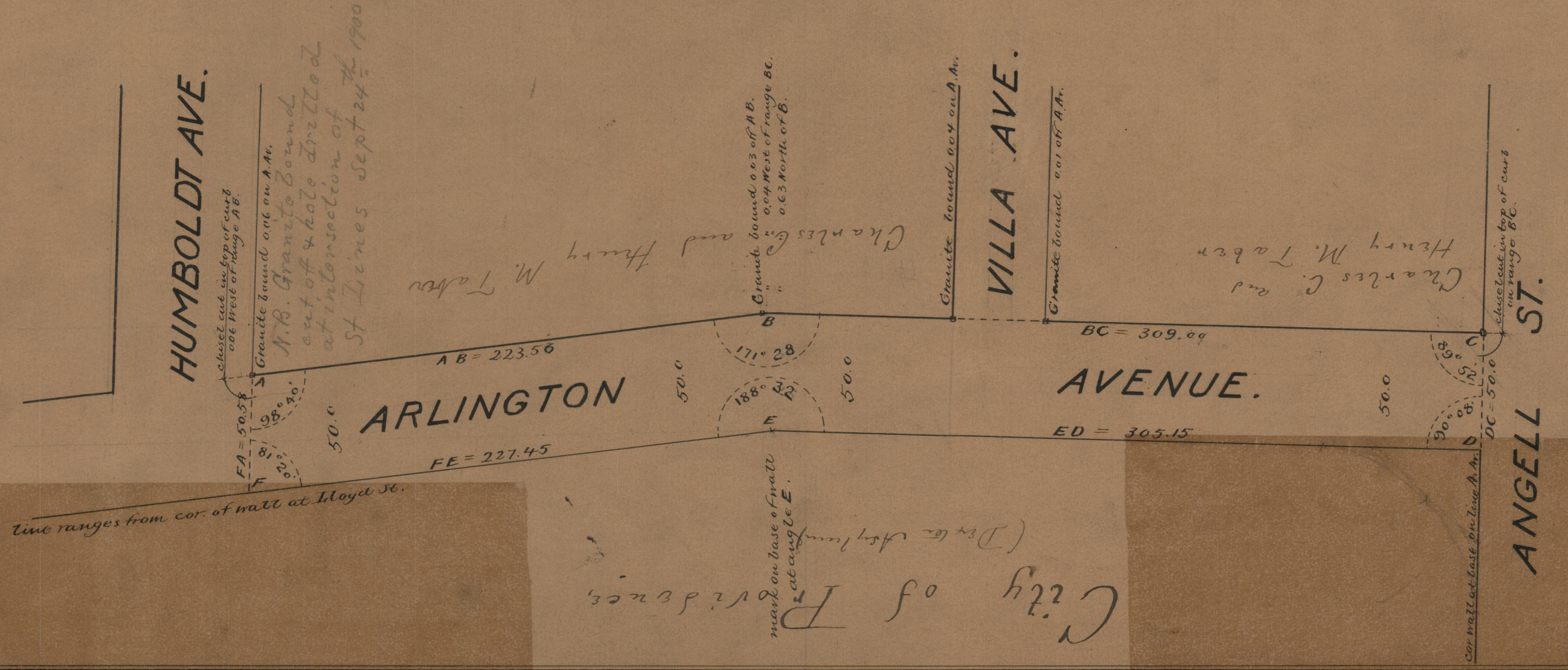
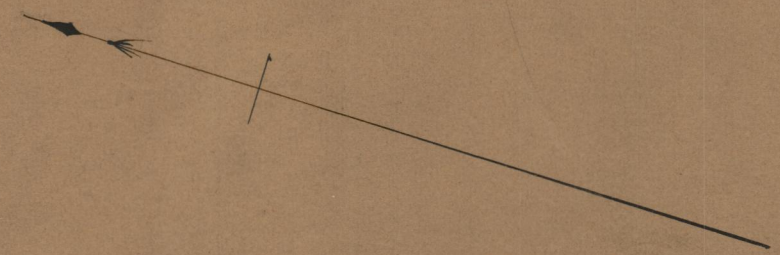
015527

Providence R.I.
This plat accompanies
our report of this date

PLAT OF ARLINGTON AVENUE FROM ANGELL ST. TO HUMBOLDT AVE.

SCALE 50 FEET PER INCH

532.58



City of Providence
(Director Asst. Engineer)

85
A-20
85
A-20

OFFICE No.	10251
DRAWER	85
SHEET	A

85
A-20