

H.F.S. XVII-114-117

PROVIDENCE, R. I.  
CITY ENGINEER'S OFFICE  
STREET LINE DEPT.

July 22, 1889

015287

Red offsets added May 26, 1890

Changed to Holden St.

June 20, 1895

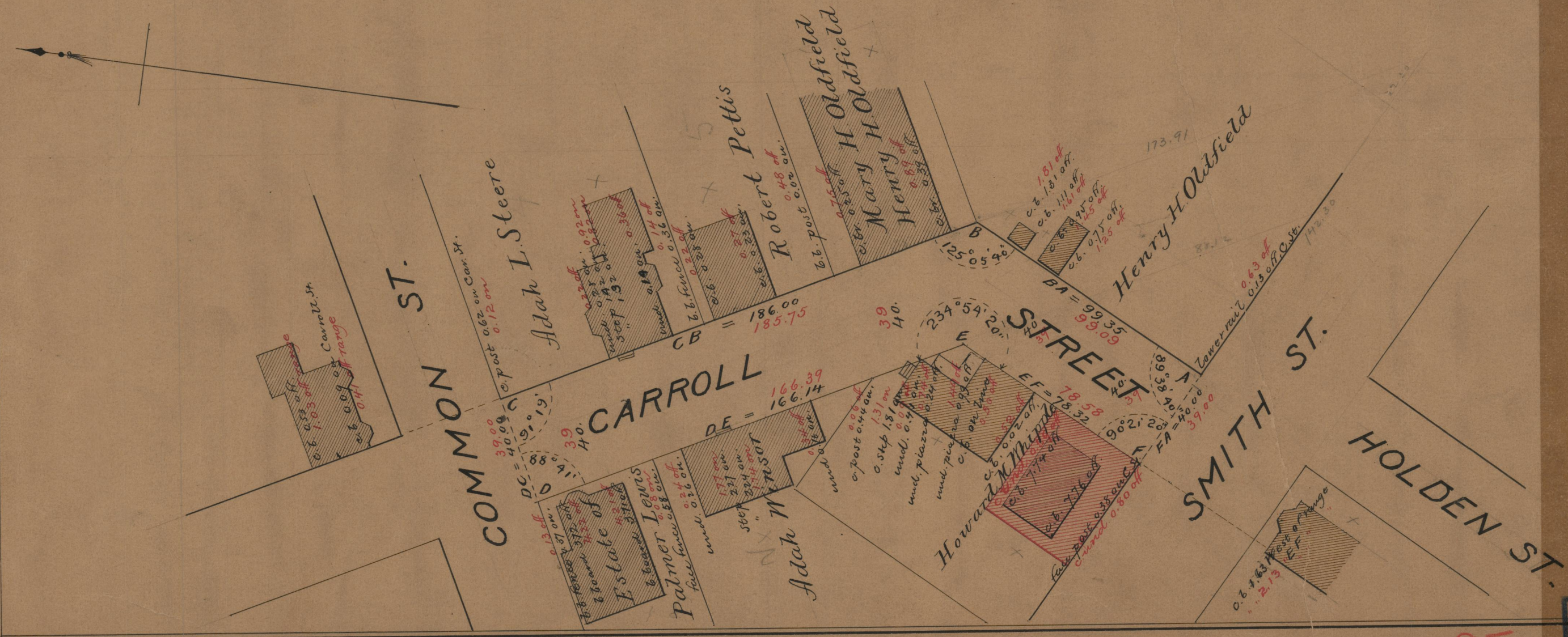
Providence R.I.  
This plat accompanies  
our report of this date

PLAT OF

# CARROLL STREET

FROM SMITH ST. TO COMMON ST.

SCALE 40 FEET PER INCH



85  
A-11

85  
A-11

OFFICER NO.	100
DRAWER	A
SHEET	A-11