

PLAT OF  
**EVERGREEN STREET**

PROVIDENCE, R.I.  
CITY ENGINEER'S OFFICE  
STREET LINE DEPT.

Nov. 2, 1893

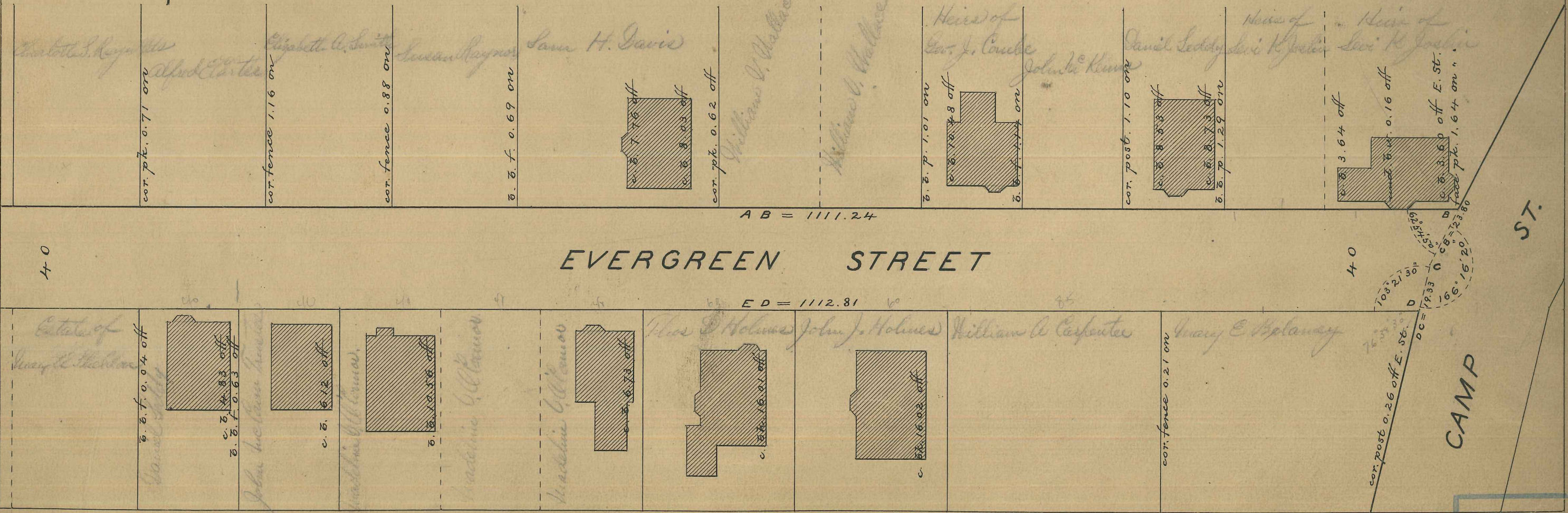
021813

FROM NORTH MAIN ST. TO CAMP ST.

IN TWO SHEETS.

SCALE 40 FEET PER INCH.

1112.02



AB = 1111.24

EVERGREEN STREET

ED = 1112.81

CAMP ST.