

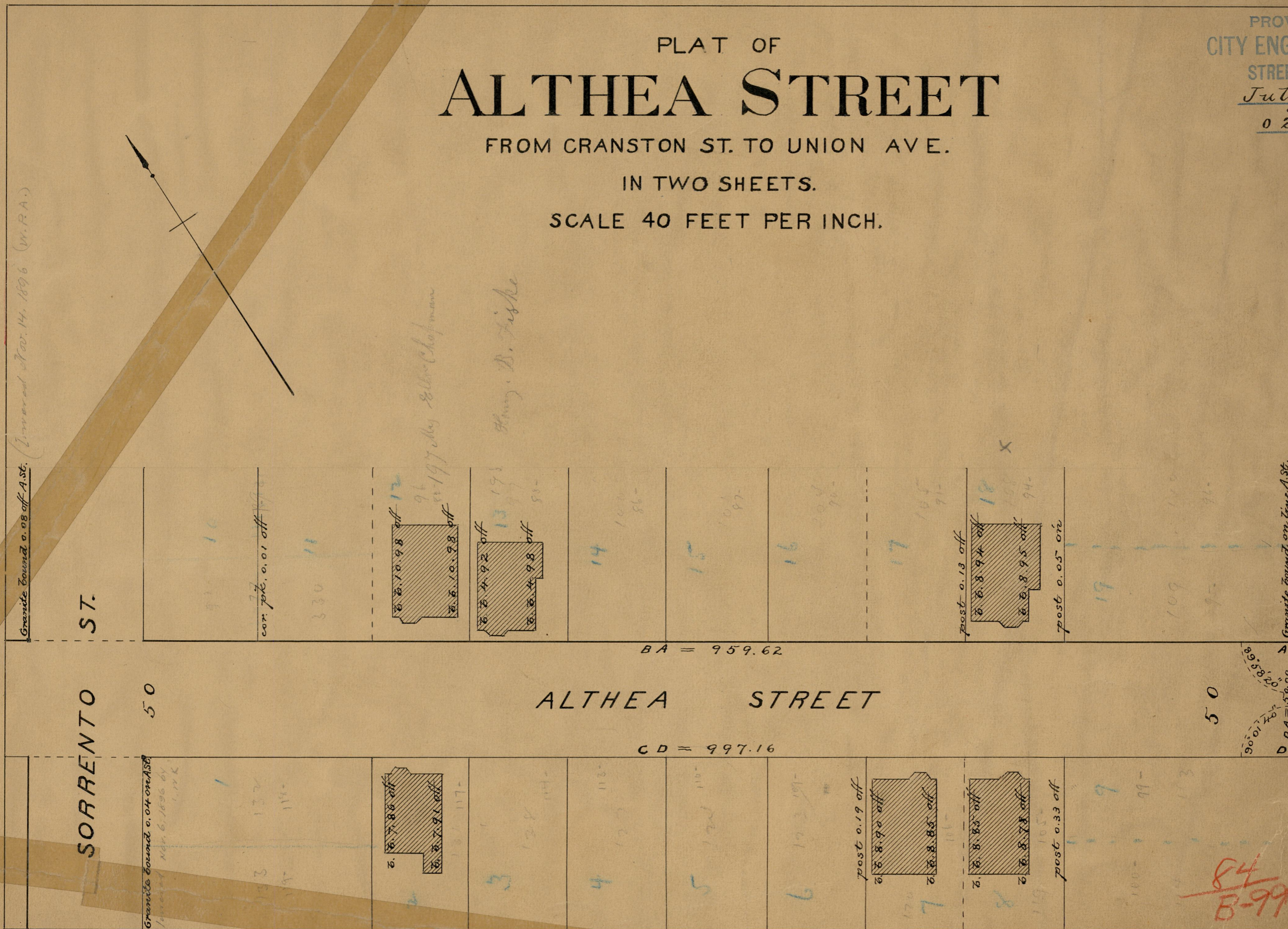
PROVIDENCE, R.I.
CITY ENGINEER'S OFFICE
STREET LINE DEPT.
July 23, 1895.
024214

PLAT OF ALTHEA STREET

FROM CRANSTON ST. TO UNION AVE.

IN TWO SHEETS.

SCALE 40 FEET PER INCH.



Granite bound 0.08 off A.St. (Inward 300.44, 1896 (M.P.A.))

SORRENTO ST.

50

ALTHEA STREET

CRANSTON ST.

84
B-99

84
B-99

No. 1264
84